

Mortar Fix-Pro
R-MFP-300-UK



TECHNICAL DATA

Parameter		Value
Chemical base	-	Styrene Free Polyester
Application temperature	[°C]	-5°C to +30°C (with substrate <5°C, cartridge temperature must be ≥20≤30°C)
Colour	-	Grey and Stone
Shelf life	[months]	18
Storage conditions	-	upright position in an originally closed container
		the storage temperature from +5°C to +25°C
		dry, cool and well-ventillated place away from direct sunlight and other sources of ignition
		storing the product in conditions other than recommended may shorten the shelf life

Setting Time		
Substrate Temperature	"Working Time"	"Curing Time"
30°C	2 min	20 min
20°C	5 min	45 min
15°C	8 min	60 min
10°C	12 min	80 min
5°C	20 min	2 hr
0°C	40 min	3 hr
-5°C	60 min	6 hr

The storage temperature:
from +5°C to +25°C **(room temperature is recommended)**

Upright position
in an originally closed container

Shelf life
18 months

Dry, cool and well-ventilated place
away from direct sunlight and other sources of heat and ignition

PRODUCT OPTIONS

- R-MFP-300-SAND-UK
- R-MFP-300-GREY-UK

BASE MATERIALS

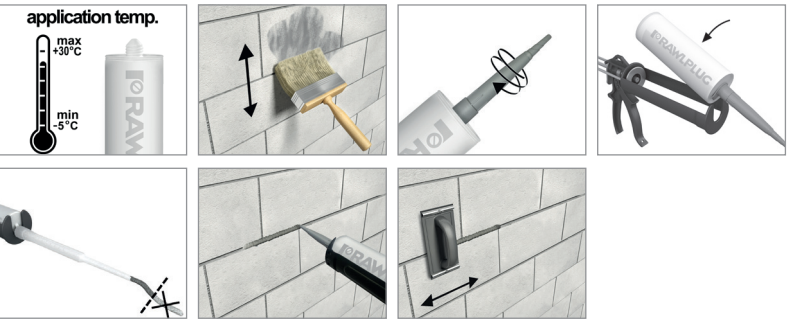
Concrete,
Aerated Concrete Block,
Ceramic,
Solid Brick,



Mortar Fix-Pro
R-MFP-300-UK



INSTALLATION GUIDE



1. The surface, that repair mortar will be apllied on should be clean, free of dust, remains of old seal and other substances that might weaken the adhesion.
2. Using the mixer nozzle provided ensure an even colour before application.
3. Shape and work the mortar within the working time.
4. A new nozzle is required once the working time is exceeded, as the mortar will harden inside the nozzle.
5. Remove excess of uncured mortar from surfaces, tools, hands using paper towel.
6. Remove cured mass from tools or surfaces mechanically.



Rawlplug Ltd
Skibo Drive
Thornliebank Industrial Estate
Glasgow G46 8JR

Contact us
t: +44 (0) 141 638 7961
e: rawlinfo@rawlplug.co.uk
www.rawlplug.co.uk



MORTAR FIX-PRO
RAPID CURE

” **READY TO USE - 2 PART FORMULA**
REPAIR MORTAR FOR REPAIRING
CRACKS & SEALING JOINTS
Saves time and energy



HIGHLIGHTS

Trust & Innovation
www.rawlplug.co.uk



” SAVES TIME AND ENERGY



Wide range
of applications

Mortar FixPro is a rapid 2 part polyester ready component for repairing cracks and sealing joints. The formula is delivered through a special mixing nozzle directly into the repair area. This reduces mess and waste as well as being more efficient.

Is suitable for indoor and outdoor use. It can also be applied to slightly damp surfaces without any preparations.



APPLICATIONS

- Sealing and filling gaps
- Repairing chipped edges
- General repair work
- Repairing masonry joints and roof tiles
- Sealing cracks and scratches in walls
- Fixing roof tiles
- Available in 300ml cartridge



READY TO USE
No need to add water



EASY
Application



SAND & GREY
Options available



CLEAN
Purposeful work



GOOD ADHESION
Building materials



WEATHER RESISTANCE
After curing

www.rawlplug.co.uk

Ready to use repair mortar for filling gaps



Universal
For joint in- and
outdoor
applications

Good adhesion
to common
building
substrates



Applicable
for slightly
wet substrates



Paintable
after hardening

**Weathering
and UV
resistance**
enable broad use



Quick and easy
application for
cracks in walls

”

LONG SHELF LIFE

18 months

SAVES TIME AND MONEY

- No need for pre-mixing. Ready to use
- No mixing of sand, cement and water required

SPECIAL PROPERTIES PERFECT FOR APPLICATIONS

- Water-resistant and paintable once cured
- Free of silicone

EASY TO APPLY

Quick and easy to use with a dispenser gun

FEATURES AND BENEFITS

- Repairing mortar can be applied to slightly wet surfaces
- Mortar is resistant to changing weather conditions and UV radiation
- Mortar is suitable for indoor and outdoor applications
- For jointing and bonding of tiles and stones
- Fast curing
- 2-part polyester ready component
- Styrene free for use indoors or outdoors (low odour)
- Repairs cracks in concrete
- Paintable
- Bonds most construction materials

ACCESSORIES



R-GUN-300-N

