



PRODUCT INFORMATION

Rawlplug code		Coating					Anchor Length [mm]
		ZP	A4	M8	M10	M12	
	R-HPTIII		✓	✓	✓	✓	60 - 180
	R-HPTIII	✓		✓	✓	✓	60 - 180

VARIABLE DEPTH ANCHORAGES

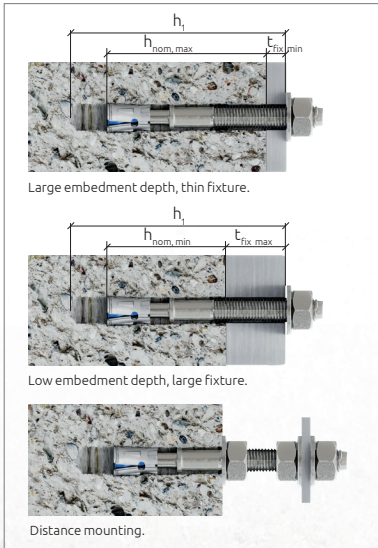
Variable anchoring depth allows to adjust the depth of anchor embedding in the hole depending on designed loads. This enables us to be efficiently use the length of the anchor and select it accordingly from the thickness of the fastened element.

Due to the high load capacity of R-HPTIII, we can embed it relatively shallow.

If we want to increase the strength of the anchors, we can anchor them to greater depths. Thanks to that we are able to use full strength of the concrete, especially in its highest classes.

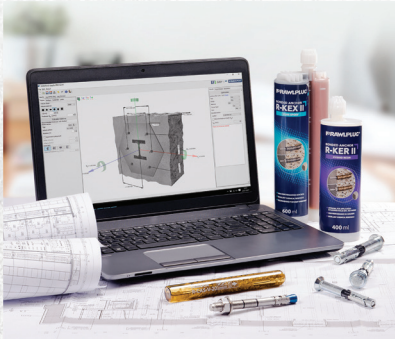
High load capacity and shallow anchoring allows us to accelerate work because we can drill holes to smaller depths.

R-HPTIII anchors can also be installed in small distances from each other and from the edge of the concrete.

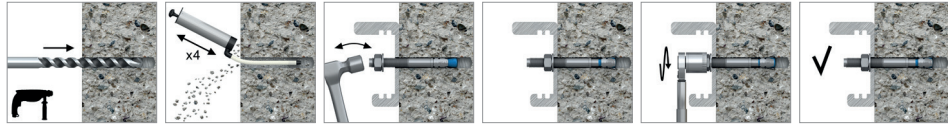


EasyFix DESIGN APPLICATION

An innovative application that allows you to perform calculations for the implementation of the necessary fasteners various types of elements in construction using Rawlplug® brand products. Rawlplug EasyFix is being created based on the latest design guidelines, compliant with EAD, ETAG and EUROCOD, providing calculations compliance, precision and ultimate usability. Program modules are dedicated to specific segments execution works. Each of them allows to perform real-time calculations, giving the user unlimited possibilities of adjusting fasteners and elements fastened to real needs in a given moment. The application contains categories: anchors, constructions concrete, wind calculations, roads and bridges.



INSTALLATION INSTRUCTIONS



1. Drill a hole to the required diameter and depth.
2. Remove the drill cuttings and thoroughly clean the hole using the pump 4 times.
3. Insert the anchor into the hole through the fastened element and hammer it to the appropriate depth.
4. Using a torque wrench, tighten the nut to the required torque.



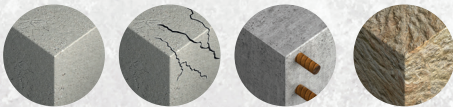
The R-HPTIII anchor is available in two versions:

- made of A4 stainless steel,
- made of carbon steel with ZP galvanic zinc coating.

The anchor is recommended for a wide range of applications, working perfectly in concrete cracked and uncracked C20/C25 - C50/C60

BASE MATERIAL

- Non-cracked concrete C20/25-C50/60
- Cracked concrete C20/25-C50/60
- Reinforced concrete, unreinforced concrete
- Natural stone (after site testing)



R-HPTIII

NEW GENERATION THROUGH BOLTS



CONCRETE
C20/25 - C50/60

Trust & Innovation

NEW GENERATION OF THROUGHBOLTS

Wide application
possibilities



THROUGHBOLT

The R-HPTII band anchor is an innovative anchor characterized by a variable anchorage depth, high load capacities allow for shallower anchoring and fixation of a larger fastened element. This allows us to drill shallower holes and use shorter anchors. Thanks to its new design, R-HPTIII anchors transfer high loads, ensuring the highest safety.

RELATED PRODUCT

R-PRH-26850
Hammer drill
SDS-PLUS, 850 W, 2,5J



RT-SDSA
Drill
Agressor
SDS plus



R-PRH18
Hammer drill 18V
SDS-PLUS 2,0J 5,0Ah



RT-SDSR
Drill
Rebardrill
SDS plus



R-HTW-20-100
Torque wrench
20-100 Nm 1/2"



RT-IS
Impact sockets 1/2"



RT-HAM
Hammer



www.rawlplug.co.uk

Fast, effective and secure anchoring



III GENERATION OF R-HPTIII ANCHORS

The new generation of R-HPTIII band anchors is even more possibilities:

- The anchor is made in two versions:
 - made of A4 stainless steel,
 - made of carbon steel with ZP galvanic zinc coating;
- Optimized cone shape to increase rake angle bands on the ground, which translates into high load capacity of the anchor in concrete;
- Variable anchoring depth allows you to choose the depth anchoring depending on the degree of anchor load;
- Short distances from the edge of the concrete and between the anchors;
- Anchor length identification mark to determine the length/ embedment depth. Allows the anchor to be identified after anchoring;
- M8, M10, M12 and a wide range of lengths;
- R-HPTIII anchors can be used in corrosivity classes C1-C5;
- Expansion band made of A4 stainless steel;
- New shape of the expansion band with an additional locking lock and an innovative ring at the end of the band ensures perfect connection between the anchor and the ground;
- Reliable and simple installation - thanks to the use of mounting through anchoring is quick and easy;
- Reduced displacement under load;
- Anchor size indicated on the stud;
- The size and maximum thickness of the fastened element are given on the stem.

PARAMETERS

Variable embedment depth, ZP coating, A4 stainless steel and a wide range of lengths allows you to choose the optimal solution for each application and fixture.

FULL MOUNTING SYSTEM INCLUDING ACCESSORIES

R-HPTIII	M8	M10	M12
RT-IS Impact sockets 1/2"	SW13	SW17	SW19
RT-SDSR Drill Rebardrill SDS plus	Ø8	Ø10	Ø12

