



RENOWNED THE WORLD OVER
RAINSCREEN CLADDING
Edition 3

OVER 100 YEARS OF EXPERTISE



RAWL



RAWLPLUG®

RAWLPLUG FIXING DEVICES

RAWLPLUG

Makers of the World's finest masonry fixing devices

Greenock Graving Dock

Shown here, the Graving Dock at Greenock, one of the largest in the world, in which thousands of the **Rawlplug Bolt fixing devices** were used. The dock was built by Messrs. Edmund Nuttall, Sons & Co. Ltd., for the Firth of Clyde Dry Dock Co. Ltd., and the Consulting Engineers were Messrs. Burns, Babbie Partners, to whom we are indebted for permission to publish this photograph.

One of its most recent occupants was Cunard's 65,000-ton liner 'Q.E.2' for fitting out.

M4 Motorway

(Right) More than 28,000 **J22 Rawlbolts** were used to secure the safety barriers for 1½ miles of the elevated Chiswick interchange of this motorway.

Photograph by permission of Marples, Ridgeway & Partners, Kier Ltd., and Christiani & Nielson, Ltd.

Berkeley Power Station

(Far right) One of the first of the U.K. chain of Atomic Power Stations, Berkeley, was built by the A.E.I. John Thompson Nuclear Energy Co. Ltd. From the beginning, **Rawlties, Rawloops, Rawlbolts and Rawlplugs** were used throughout in the construction. We are indebted to the above for permission to use the photograph.

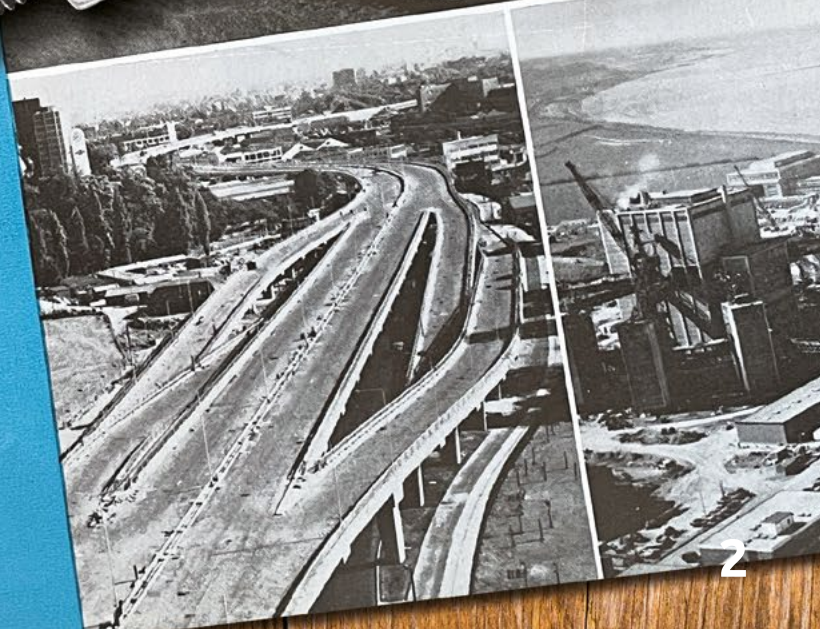
London's Transmitting Tower

Over 600 feet high and constructed for the G.P.O. to carry aerials and equipment for micro-wave and T.V. transmissions, this new tower dominates London.

Built by Messrs. Peter Lind Ltd. and designed in the office of the Directorate General of Works of the Ministry of Public Building and Works, this tower has a revolving restaurant at the top, providing wonderful views of the City.

Thousands of Rawlplugs, Rawlbolts, Rawlsockets and Super Drilanchors were used in the installation of the vast amount of electrical apparatus and in the building of this structure, with which we are proud to have been associated.

The photograph is shown by courtesy of H.M. Postmaster General.





Innovating
Since 1919



For over
100 years



Pages 68-69
SUPPORT & SERVICES



Page 71
INDEX SEARCH



Page 72
CONTACT DETAILS



Page 74
TERMS & CONDITIONS





Born in London. Raised in Britain.
We are
RAWLPLUG®
Bringing it over the world.



Bonded Anchors

R-CFS+ KERII + R-STUDS 6-7



R-KERII 8-9



Concrete Screws

R-WBT-61 10-11



Concrete Screwbolts

R-LX-HF-A4 12-13



Concrete Throughbolts

R-HPTIII-A4 14-15



Façade Fixings

KI-10 16-17



KI-10N 18-19



R-TFIX-8S 20-21



Steel Façade Fixings

MBA
MBA-SS 22-23



Frame Fixings

R-FFS-K-A4 24-25



R-FF1-N-K-A4 26-27



Self-Drill Screws

R-CBS-45
R-CBS-45 -A2 28-29



R-CWT-LG
R-CWTS-LG 30-31



R-PH-LG
R-PH-HG 32-33



OCS-48
OCS-55
R-OCS-63 34-35



OCS-55/63 36-37



ONS-55 38-39



R-WX-48T
R-WX-48T-A4
R-WX-55T-A4 40-41



Spreader Washers

R-KC-60 42-43



KWL-090PP 44-45



Steel Spreader Washers

MKC
MKC-SS 46-47



R-POK-ALZN
R-POK-06-ALZN
R-RSW-85-SS 48-49



Resin Extrusion Tools

Drill Adapter
Extrusion Tool 50-51



Rawlplug CFS+ System

R-CFS+ KERII Hybrid Resin with Threaded Rods



600ml

90% Less Plastic

Fire Safety Tests

High strength & versatile application in cracked and non-cracked concrete

Approval for use with hollow core drill bits

Up to 100 Years of Service Life

Up to 18 months of shelf life

Cracked Concrete C20/25 - C50/60

Concrete C20/25 - C50/60

Rawlplug CFS+ System

CFS+ is Rawlplug's tribute to our natural environment, without compromising on quality

Our portfolio of bonded anchors from the cartridge-free system are known for extensive certification (LEED, VOC, hygiene certification), durability and versatility (suitable for cracked and non-cracked concrete), and are proven solutions that make work easier.



RAWLPLUG® patented cartridge-free system (CFS+) comes ready to use in a self-opening foil container

This minimises waste and is ideal for projects requiring large amounts of anchors, and is why its extremely popular with industry professionals.

Chemicals are mixed together and a mineral additive is introduced. The ready-mixed resin is then blended and transferred into foil casings ready for use - a fully automated process conforming to strict health & safety regulations.

See page 9 for applications

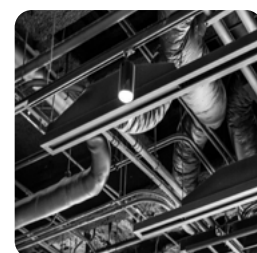
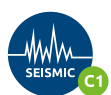
Code	Type	Size	Quantity
CFS+KERII-600 + R-STUDS	Foil	600ml	1

Pair with R-CFS+KERII 600ml Foil Gun



Code	Type	Size	Quantity
R-CFS+KERII	Foil	600ml	1

ETA-21-0242 | UKTA 0836-22/6130



Rawlplug R-KER II

Hybrid High Performance Vinylester Resin



2 Sizes

Option 1 ETA Approved

High strength & versatile application in cracked and non-cracked concrete

Approval for use with hollow core drill bits

Up to 100 Years of Service Life

Up to 18 months of shelf life

Cracked Concrete
C20/25 - C50/60

Concrete
C20/25 - C50/60

Rawlplug R-KERII Bonded Anchor

Hybrid high performance vinylester resin

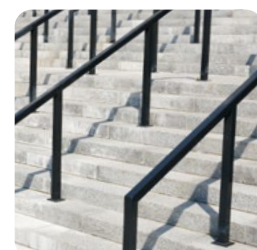
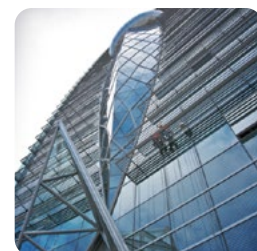
- Option 1 ETA approved resin system
- Approved for use in cracked and non-cracked concrete
- Suitable for use in wide temperature range
- Suitable for use in dry, wet and submerged substrates
- Excellent chemical resistance (durable in alkaline and sulphurous conditions)
- Multiple uses (continue partly used cartridge with new nozzle)
- Wide range of applications (used in conjunction with the R-STUDS range, M8-M30). Variation of length and material finishes to suit substrate build-up



Applications

- Pipeline systems
- Seismic strengthening and bracing of reinforced concrete buildings
- Cable conduits and trays
- Steelwork
- Rebar doweling
- Starter bars
- Curtain walling
- Cladding restraints
- Heavy machinery
- Handrails
- Safety barriers
- Racking systems
- Canopies
- Platforms
- Street lamps
- Passenger lifts
- Balustrading
- Formwork support systems

Code	Type	Size	Quantity
R-KER-II-300	Cartridge	300ml	1
R-KER-II-400-UK	Cartridge	400ml	1



ETA-21-0242 | UKTA 0836-22/6130



Rawlplug R-WBT-61

Screw for Concrete Substrates

Zinc Flake Coating | 6.1mm | TX25 Head



Fast and
hassle-free
installation

Anti-corrosion
coating

Improved
efficiency

Versatile
applications

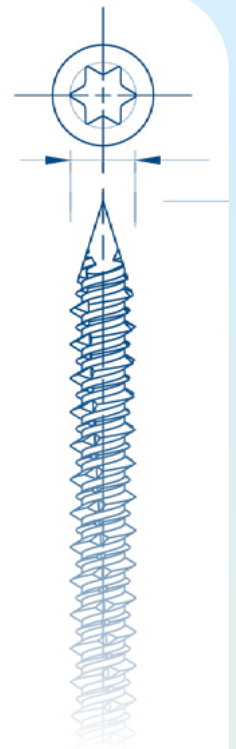
Approved for use in:

Concrete

Concrete Slab

Timber

Rawlplug R-WBT-61 Concrete Screw



Screw for concrete substrates, specially designed to allow connecting to concrete and wood

- Hardened thread surface
- High quality anti-corrosion coating guarantees resistance of 15 Kesternich cycles
- Specially designed thread for connecting to concrete & wood
- Sharp drill point prevents surface movement

Applications

- Insulation materials in flat roof applications in conjunction with telescopic connector and steel washer
- Soffit liner insulation to concrete and hollow core slabs

Code	Length mm	Quantity
6.1mm Drill Size		
R-WBT-61050	50	100
R-WBT-61075	75	100
R-WBT-61090	90	100
R-WBT-61100	100	100
R-WBT-61120	120	100
R-WBT-61140	140	100
R-WBT-61160	160	100
R-WBT-61H160	160	100
R-WBT-61180	180	100

Code	Length mm	Quantity
Continued		
R-WBT-61H180	180	100
R-WBT-61200	200	100
R-WBT-61220	220	100
R-WBT-61240	240	100
R-WBT-61260	260	100
R-WBT-61300	300	100
R-WBT-61350	350	100
R-WBT-61400	400	100

Stainless steel tube for use with R-WBT-61 concrete screws, maximum insulation of 600mm



Code	Price & Availability per Enquiry
R-KCX-155-A2	Please contact your Area Sales Manager or call 0141 638 7961
R-KCX-255-A2	

ETA-09/0346 | UKTA-22/6338



Rawlplug R-LX-HF-A4

Self-Tapping Concrete screwbolt



A4-316 Steel | Patented Threadform

Hex with Flange

Versatile
applications

Excellent for
temporary
fixing

High Performance

Cracked Concrete
C20/25 - C50/60

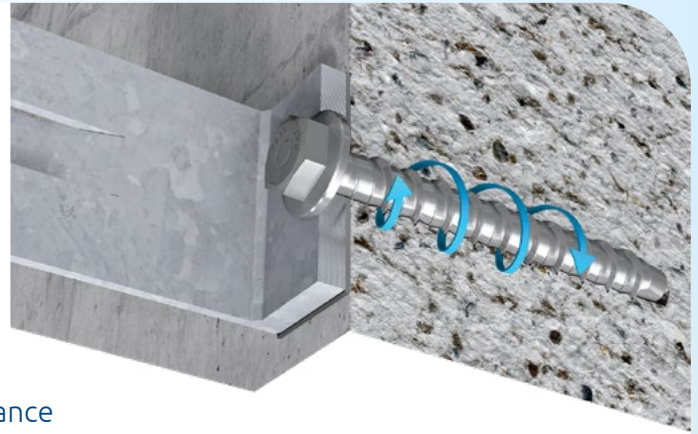
Concrete
C20/25 - C50/60

Reinforced
Concrete

Unreinforced
Concrete

Natural Stone
(After site testing)

Rawlplug R-LX-HF-A4 Concrete Screwbolt



R-LX-HF-A4 Hex with flange concrete screw anchor

- A4-316 Stainless Steel for best corrosion resistance
- Time-efficient installation through streamlined procedure, simply drill and drive
- Completely removable with possibility of reuse
- Unique design with patented threadform ensures high performance for relatively small hole diameter
- Non-expansion functioning ensures low risk of damage to base material and makes R-LX ideal for installation near edges and adjacent anchors
- Oversize head for fixtures with elongated holes
- High performance in both uncracked and cracked concrete

Applications

- Through-fixing
- Fire brackets to concrete

Code	Drill Size mm	Length mm	Quantity
6.3mm			
R-LX-05X045-HF-A4	5.0	45	50



ETA-17/0806 | UKTA-22//6199



Rawlplug R-HPTIII-A4

New Generation Throughbolt Anchor



Stainless Steel | Option 1 Cracked Concrete Approved

Fire resistance
R30 - R120

Suitable for cracked
& non-cracked concrete
C20/25 - C50/60

Corrosion class
C1 - C5

Quick & comfortable
application with
SDS mallet

Cracked Concrete
C20/25 - C50/60

Concrete
C20/25 - C50/60

Rawlplug R-HPTIII-A4 Throughbolt Anchor



A new generation of R-HPTIII band anchors with variable embedment depths

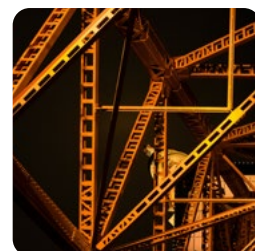
- Option 1 Cracked Concrete Approved
- Suitable for cracked & non-cracked concrete C20/25 - C50/60
- Fire resistance R30-R120
- Corrosion class C1 - C5
- Short distances between anchor and concrete edge
- Decreased displacement under influence loads
- Can be used to fasten steel, aluminium and wood elements
- Newly shaped expansion band with additional lock
- Innovative ring at the end of headband provides excellent connection between anchor and ground

Applications

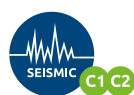
- Ventilated façades
- Barriers and railings
- Steel structures
- Curtain walls
- Heavy equipment
- Fences and gates
- Passenger lifts and platforms
- Stadium seats

Code	Drill Size	Length mm	Quantity
R-HPTIII A4-12115/40	M12	115	50
R-HPTIII A4-12125/50	M12	125	50

Extended range of M8, M10 & M12 available



ETA-21/1082 Pending



Rawlplug KI-10

Façade Fixing with Plastic Pin



Fibre Glass Reinforced Plastic Nail

Resistance against
forces influencing
the façade fixing

Resistance against
hygro-thermal agents

Resistance against
weight of the insulation
system

Concrete
C12/15
C50/60
Cat A

Solid Brick
Cat B

Solid
Sand-lime
Brick
Cat B

Vertically
perforated
Clay Block
Cat C

Hollow
Sand-lime
Brick
Cat C

Hollow
Lightweight
Concrete Block
Cat D

Aerated
Concrete
Block
Cat D

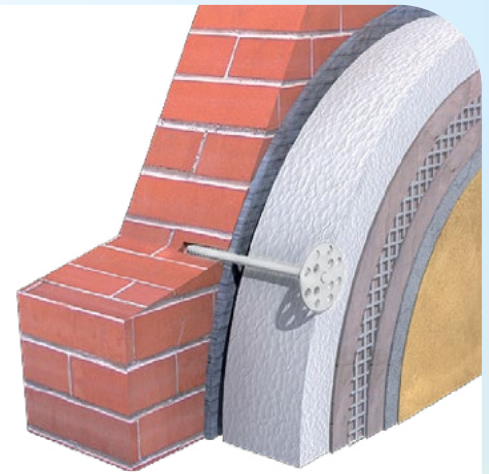
Lightweight
Concrete
Block
Cat C

Reinforced components
of lightweight
aggregate concrete
Cat D

Rawlplug KI-10 Façade fixing with plastic pin

Hammerset insulation fixing with reinforced plastic nail

- The plastic nail reduces heat transmission (value 0.0W/K)
- Plastic nail reinforced with glass fibre allows fast and trouble-free installation with correct plug expansion
- Expansion zone designed for low embedment depths, reducing the amount of drilling required
- Optimal product parameters makes it a cost-saving solution
- Optimal plate stiffness ensures stability and excellent pull-over values



Applications

- Polystyrene boards
- Mineral wool (MW) boards
- Light wood wool buildings boards
- Polyurethane boards
- Wood fibre boards
- Lightweight recycled panels
- External Thermal Insulation Composite Systems (ETICS)

Code	Drill Size mm	Length mm	Fixture Thickness mm	Quantity
60mm Plate Diameter				
KI-070	10	70	35	250
KI-090	10	90	55	250
KI-120	10	120	85	250
KI-140	10	140	105	250
KI-160	10	160	125	250
KI-180	10	180	145	250
KI-200	10	200	165	250
KI-220	10	220	185	250



ETA-07/0291 | UKTA-22/6369



Rawlplug KI-10N

Façade Fixing with Metal Pin



High Performance Steel Nail

Resistance against
forces influencing
the façade fixing

Resistance against
hygro-thermal agents

Resistance against
weight of the insulation
system

Solid Brick
Cat B

Vertically
perforated
Clay Block
Cat B

Hollow Brick
Cat B

Lightweight
Concrete Block
Cat B

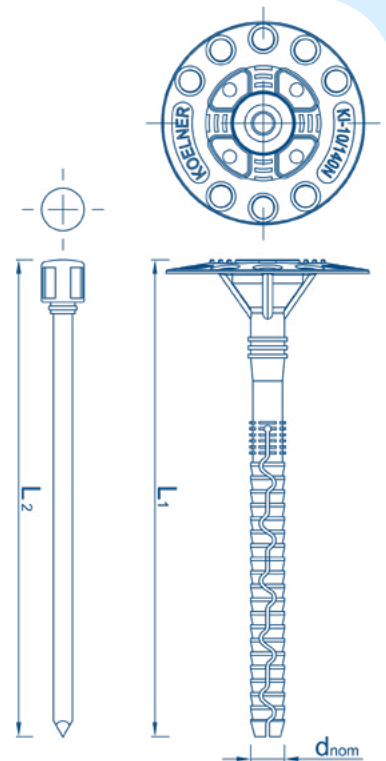
Reinforced components
of Lightweight Aggregate
Concrete
Cat D

Aerated
Concrete
Block
Cat D

Rawlplug KI-10N Façade fixing with metal pin

Long expansion zone hammer-in façade fixing with metal pin

- Easy installation with best performance in lightweight base materials
- Approved for use in base material categories B,C,D,and E
- Steel nail allows fast and trouble-free installation with correct plug expansion
- Reduction of thermal bridge formation (value 0.3W/K) through the integration of an impact-resistant plastic over-moulding on the nail head
- Plate stiffness (value 0.5 kN/mm) ensures smooth elevation surface and stable insulation system
- Can be used with additional KWL insulation holding plate, available in 90, 110 and 140mm flange sizes

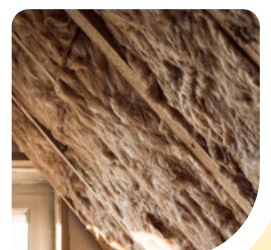


Applications

- External Thermal Insulation Composite Systems (ETICS)
- Polystyrene (EPS) boards
- Mineral wool (MW) boards
- Light wood wool building boards
- Polyurethane (PU) boards
- Lightweight recycled panels

Code	Drill Size mm	Length mm	Fixture Thickness mm	Quantity
60mm Plate Diameter				
KI-120N	10	120	60	250
KI-140N	10	140	70	250
KI-160N	10	160	90	250
KI-180N	10	180	110	250
KI-200N	10	200	130	250
KI-220N	10	220	150	250
KI-260N	10	260	190	200
KI-300N	10	300	210	200

ETA-07/0221 | UKTA-22/6343



Rawlplug R-TFIX-8S

Screw-in Façade Fixing



Metal Screw for Precise Installation

Resistance against
forces influencing
the façade fixing

Resistance against
hygro-thermal agents

Resistance against
weight of the insulation
system

Concrete
C12/15
C50/60
Cat A

External
Wall Panel
of Concrete
Cat A

Solid Brick
Cat B

Solid
Sand-lime
Brick
Cat B

Vertically
perforated
Clay Block
Cat C

Hollow
Lightweight
Concrete Block
Cat D

Autoclaved
Aerated
Concrete
Cat E

Rawlplug R-TFIX-8S Universal Façade fixing

Versatile screw-in façade fixing with high performance in all base materials recommended for ETICS

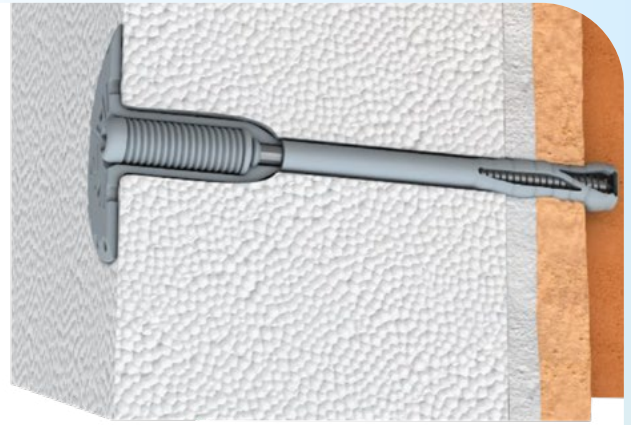
- Quick and easy installation in all substrates (categories A,B,C,D,E)
- Unique sleeve compression zone for precision installations
- The long plastic over-moulding on the R-TFIX-8S screw minimises thermal bridging (value 0,001-0,002W/K), contributing to energy-saving benefits
- Plate stiffness (value 0.6 kN/mm) ensures smooth elevation surface and stable insulation system
- Unique design allows for high load-bearing capacities. This reduces the quantity of fixings required per square metre of insulation
- The shortest embedment depth at the maximum strength parameters
- Pre-assembled screw saves time and labour

Applications

- External Thermal Insulation Composite Systems (ETICS)
- Polystyrene (EPS) boards
- Mineral wool (MW) boards
- Polyurethane (PU) boards
- Cork boards
- Light wood wool building boards

Price & Availability per Enquiry

Please contact your Area Sales Manager or call 0141 638 7961



ETA-17/0161 | UKTA-22/6348



Rawlplug MBA & MBA-SS

Steel Façade Fixing

Fire-Resistant

Stainless Steel | Steel Zinc



Class A1 Fire-resistant
for applications
requiring R120

Wide range of
fixing lengths

Anti-Corrosion
finish

Approved for use in:
Concrete C20/25 - C50/60

Solid Brick

Solid Sand-lime Brick

Aerated Concrete Block

Rawlplug MBA & MBA-SS Steel Façade fixing

Fire-resistant stainless steel insulation fixing

- Metal facade fixing, recommended for use when fire resistance (F120) is a requirement
- Stainless steel (MBA-SS) material for high corrosion resistance
- Fast and simple hammer-set installation reduces working times
- Extensive dimensional range allows anchorage of insulation boards up to 250mm thick
- Accessory spreader plate, MKC-SS (85mm diameter) also available for installation of soft insulation materials such as mineral wool

Applications

- Mineral wool (MW) boards
- Glass wool
- Lightweight wood wool building boards
- Lightweight recycled panels
- Polystyrene (EPS) boards
- Polyurethane (PU) boards

Carbon Steel Zinc		
Maximum Insulation of 270mm		
Code	Length mm	Quantity
40mm Plate Diameter		
8mm Drill Size		
MBA-08090	90	250
MBA-08110	110	250
MBA-08140	140	250
MBA-08170	170	250
MBA-08200	200	250
R-MBA-08210	210	250
R-MBA-08230	230	250
MBA-08250	250	125
MBA-08300	300	125

Stainless Steel		
Maximum Insulation of 370mm		
Code	Length mm	Quantity
40mm Plate Diameter		
8mm Drill Size		
MBA-SS-08090	90	250
MBA-SS-08110	110	250
MBA-SS-08140	140	250
MBA-SS-08170	170	250
MBA-SS-08200	200	250
MBA-SS-08250	250	125
MBA-SS-08300	300	125
MBA-SS-08330	330	125
MBA-SS-08370	370	125
MBA-SS-08400	400	250

ITB-KOT-2018/0721



Rawlplug R-FFS-K-A4

Frame fixing with shortest anchoring zone

Stainless Steel | Collar Hex Head



4kN High load capacity in concrete

Fire resistance Class 1A

8.5kN High shear load thanks to thickened screw and steel grade 6.8

Can be used on a wide range of base materials (A,B,C,D)

Cracked concrete \geq C12/15 Cat A

Solid brick Cat B

Solid sand-lime brick Cat B

Hollow sand-lime brick Cat C

Hollow brick Cat C

Hollow lightweight concrete block Cat D

Aerated concrete block Cat D

Concrete \geq C12/15 Cat A

Rawlplug R-FFS-K-A4 Frame Fixing

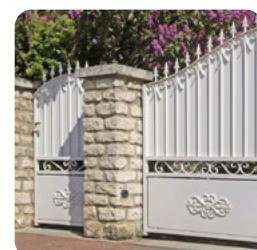
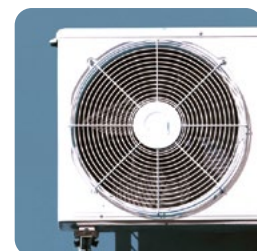
Universal solution for all applications

- Shortest anchoring depth - only 40/50mm
- Made from A4 stainless steel for outdoor use
- Specially formulated nylon for best performance in all base material categories according to ETAG 020 (A,B,C,D)
- Internal plug geometry designed to fit the screw head
- Plug design ensures multi-axis expansion
- Collard plug for fixing of hard materials eg. steel

Applications

- Ventilated facades
- Door & window frames
- Garage doors
- Gates
- Industrial doors
- Facade (substructures made of wood & metal)
- Wall cabinets
- Satellite dishes
- Shelves
- Handrails
- Cable trays

Code	Drill Size	Plug mm	Screw mm	Quantity
R-FFS-N-10K060-A4	M10	10 x 60	7 x 69	50



ETA-18/0818



Rawlplug R-FF1-N-K-A4

Nylon Universal Frame Fixing

Stainless Steel | Collar Hex Head



Unique design
ensures the highest
parameters

Two anchoring depths
50/70mm for flawless
installation

Versatile & efficient
with best corrosion
protection

Cracked
concrete
≥ C12/15
Cat A

Solid brick
Cat B

Solid
sand-lime
brick
Cat B

Hollow
sand-lime
brick
Cat C

Hollow brick
Cat C

Hollow
lightweight
concrete block
Cat D

Aerated
concrete
block
Cat D

Concrete
≥ C12/15
Cat A

Rawlplug R-FF1-N-K-A4 Frame Fixing

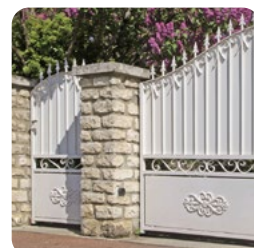
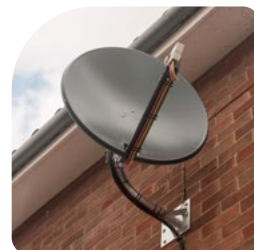
Universal solution for all applications

- Stainless steel screw is best for anti-corrosion and external applications
- Collared plug for fixing of hard materials eg. steel
- Specially formulated nylon for best performance in all base material categories according to ETAG 020 (A,B,C,D)
- Internal plug geometry designed to fit the screw head
- Plug design ensures multi-axis expansion

Applications

- Door & window frames
- Garage doors
- Gates
- Industrial doors
- Facade (substructures made of wood & metal)
- Wall cabinets
- Satellite dishes
- Shelves
- Handrails
- Cable trays

Code	Drill Size	Plug Length mm	Quantity
R-FF1-N-10K080-A4	M10	80	50
R-FF1-N-10K100-A4	M10	100	25



ETA-12/0398



C1 - C5



C5



Rawlplug R-CBS-45 / A2

Cement & Gypsum Boards to LSF/SFS <2mm Steel...

R-CBS-45

R-CBS-45-A2

...and Timber Frame Substrates

Available in
two finishes:

R-CBS-45
Carbon Steel
Ruspert

R-CBS-45-A2
Stainless Steel

Rawlplug R-CBS-45 & R-CBS-45-A2 Self-Drill Screws

R-CBS-45 cement board screw for light steel frame & timber

- Carbon steel with hardened drill point
- Silver ruspert >500Hr salt spray test
- Minimum torque: 4.3Nm
- Hi-Lo thread

Applications

- Gypsum & cement boards to LSF/SFS and timber
- Intumescent fire barriers to OSB / plywood / sheathing and render boards

Carbon Steel with Ruspert Coating		
Code	Length mm	Quantity
4.5mm		
R-CBS-45032	32	200
R-CBS-45042	42	200
R-CBS-45062	62	200

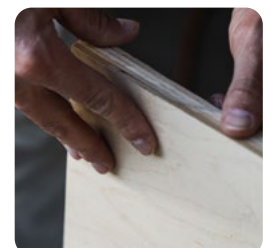
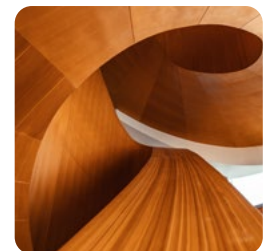
R-CBS-45-A2 cement board screw for aluminium, sheathing boards & timber

- Stainless carbon steel with hardened drill point
- 5 micron coating + clear passivate
- Minimum torque: 2.9Nm
- Hi-Lo thread

Applications

- Gypsum & cement boards to aluminium and timber
- Intumescent fire barriers to OSB / plywood / sheathing and render boards

A2-304 BIMETAL + Ruspert Coating		
Code	Length mm	Quantity
4.5mm		
R-CBS-45032-A2	32	200
R-CBS-45042-A2	42	200
R-CBS-45062-A2	62	200



Rawlplug R-CWT-LG/CWTS-LG

Wing-Tip Self-Drill Screws

4.8 & 5.5mm

Countersunk | Light Grade

R-CWT-LG

R-CWTS-LG

Saves time
with reduced
preparation

Anti-corrosion
for durability

Improved
efficiency

Versatile
applications

Rawlplug R-CWT-LG & R-CWTS-LG Csk Wing-Tip Self-Drill Screws

**R-CWT-LG & R-CWTS-LG (4.8mm & 5.5mm)
countersunk wing-tip self-drill screws
<3.5mm steel thickness**

- For sheathing boards to steel frame
- Wings are designed to help when drilling into thicker or more heavy-duty materials like metal
- Wings help enlarge the hole to provide an easier path for thread and rest of the screw to follow

Steel Thickness <i>mm</i>	Ultimate Pullout Value <i>kN</i>
1.0	1.14
1.5	2.02
2.0	3.04
2.5	4.15
3.0	5.27

Carbon Steel with Ruspert Coating

Code	Length <i>mm</i>	Quantity
4.8mm		
R-CWT-48038-LG	38	200
R-CWT-48045-LG	45	200

A2-304 BIMETAL + Ruspert Coating

Code	Length <i>mm</i>	Quantity
4.8mm		
R-CWTS-48038-LG	38	200



Rawlplug R-PH-LG / HG

Steel to Steel Self-Drill Screws
5.5mm

R-PH-LG

R-PH-HG



Saves time
with reduced
preparation

Anti-corrosion
for durability

Improved
efficiency

Versatile
applications

Rawlplug R-PH-LG & HG Self-Drill Screws

R-PH-LG (5.5mm) low profile pancake head self-drill screws, <3.5mm steel thickness, carbon steel ruspert & A2-304 bi-metal

Code	Length mm	Quantity
5.5mm		
R-PH-55019-LG	19	250
R-PH-55025-LG	26	250
A2-304 BIMETAL + Ruspert Coating		
R-PH-55025-LG-A2	26	250

**Steel
Thickness**
mm

1.0
1.5
2.0
2.5
3.0

**Ultimate
Pullout Value**
kN

1.25
2.25
3.50
4.50
6.10

R-PH-HG (5.5mm) low profile pancake head self-drill screws, <12.5mm steel thickness, carbon steel ruspert

Code	Length mm	Quantity
5.5mm		
R-PH-55038-HG	38	250

**Steel
Thickness**
mm

4.0
6.5
10.0
12.0

**Ultimate
Pullout Value**
kN

7.80
8.10
9.20
9.20

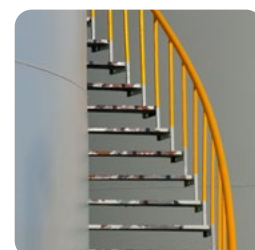
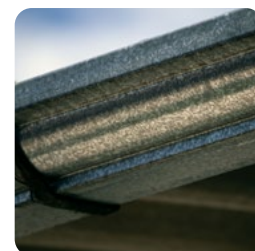
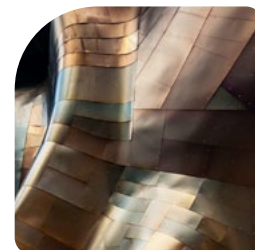
New

R-LP-A2 Low Profile Head
with TX25 Internal Drive



A2-304 BIMETAL + Ruspert Coating

Code	Length mm	Quantity
5.5mm		
R-LP-55025-A2	26	200



Rawlplug R-OCS-48 / 55 / 63

Steel to Steel Self-Drill Screws



4.8, 5.5, 6.3mm | Hex Head | A2 Bi-Metal

Saves time
with reduced
preparation

Anti-corrosion
for durability

Improved
efficiency

New 6.3mm
for greater shear
capacity

Approved for use in:

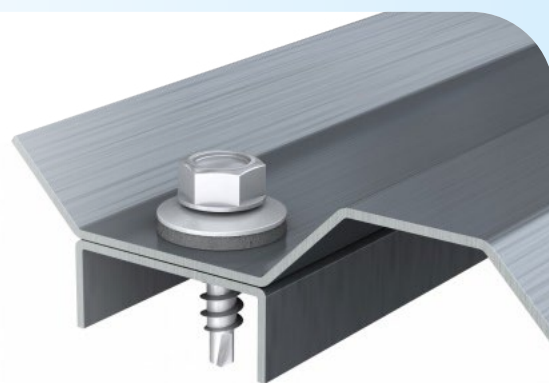
Structural Steel

Metal Sheet & Profiles

Rawlplug R-OCS-48|55|63 Self-Drill Screws

**R-OCS 4.8, 5.5, 6.3mm hex head self-drill screws
<3.5mm steel thickness | carbon steel ruspert
& A2-304 stainless steel bi-metal**

- Hardened surface of the thread (flexible core)
- Corrosion resistant zinc coating
- The shape of the thread and its height is closely related to the intended use of self drilling fixing into steel construction
- The drill bit is designed to provide quick and trouble-free installation to steel
- Sharp pointed drill prevents surface movement
- Self vulcanizing EPDM washer - temperature and UV resistant, the special shape of the washer ensures proper seating of the sealing material on the outer cladding material fixture which guarantees a proper seal



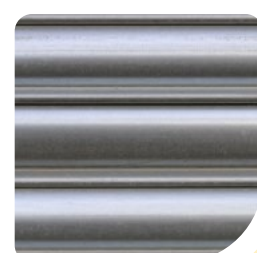
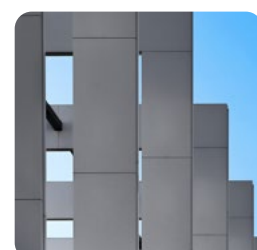
Steel Thickness <i>mm</i>	Ultimate Pullout Value <i>kN</i>
1.0	1.25
1.5	2.25
2.0	3.50
2.5	4.50
3.0	6.10

Without Washer

Code	Length <i>mm</i>	Quantity
4.8mm		
OCS-48019	19	200
5.5mm		
OCS-55025	25	200
OCS-55038	38	200
OCS-55050	50	100
OCS-55070	70	100
6.3mm NEW Greater Shear Capacity		
R-OCS-63038	38	100
R-OCS-63050	50	100

With EPDM Washer

Code	Length <i>mm</i>	Quantity
4.8mm		
OCS-48019S16	19	200
5.5mm		
OCS-55025S16	25	200
OCS-55038S16	38	200
OCS-55050S16	50	100



ETA-10/0183 according to EAD 330046-01-0602 | UKTA-22/6336



Rawlplug OCS-55/63

Self-Drill Screws

Stainless Steel

For 6mm max Composite Panels

Corrosion resistant
zinc coating

Saves time
with reduced
preparation

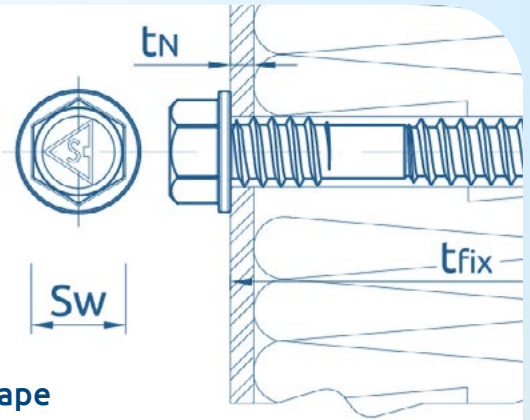
Hardened
thread surface

6.3mm for
greater shear
capacity

Approved for use in:

Metal Sheet & Profiles

Rawlplug OCS-55/63 6.3mm Self-Drill Screws for Metal Sheets



Stainless steel self drilling screw with special drill bit shape designed to provide quick installation in metal constructions made from cold formed sections

- Hardened surface of the thread (flexible core)
- Corrosion resistant zinc coating
- The shape of the thread and its height is designed for applications into sandwich panels and steel construction
- Two types of threads: one designed for mounting into a steel structure, second under head thread, prevents external panel dents and helps to seal the connection
- Sharp drill point prevents surface movement

Applications

- Profiled and cover sheets
- Roofs
- Ventilated façades

A2-304 Stainless Steel BIMETAL		
Code	Length mm	Quantity
6.3mm		
OCS-55/63090	90	100
OCS-55/63110	110	100
OCS-55/63130	130	100
OCS-55/63150	150	100
OCS-55/63170	170	100
R-OCS-55/63200	200	100
OCS-55/63230	230	100
R-OCS-55/63270	270	100
R-OCS-55/63300	300	100

Carbon Steel, Anti-Corrosion		
Code	Length mm	Quantity
6.3mm		
R-OC-55/63080G16	80	100
R-OC-55/63105G16	105	100
R-OC-55/63135G16	135	100
R-OC-55/63150G16	150	100



ETA-13/0453 | UKTA-22/6409



Rawlplug ONS-55

Steel to Steel Self-Drill Screws

5.5mm

Hex Head | A2 Bi-Metal

Saves time
with reduced
preparation

Anti-corrosion
for durability

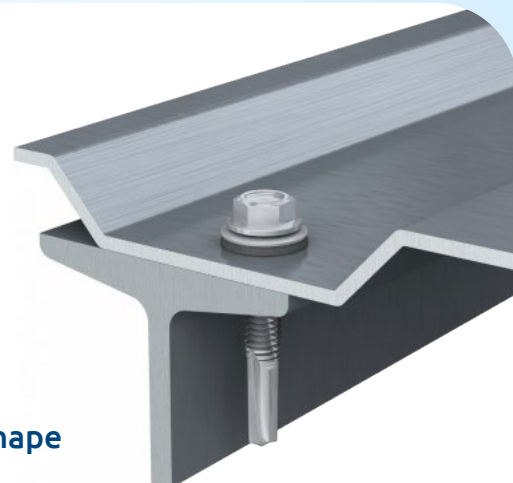
Improved
efficiency

Versatile
applications

Approved for use in:

Structural Steel

Rawlplug ONS-55 Stainless Steel Self-drill Screws



Stainless steel self-drilling screws with special drill bit shape designed to provide quick and trouble-free installation in metal constructions made from hot rolled sections

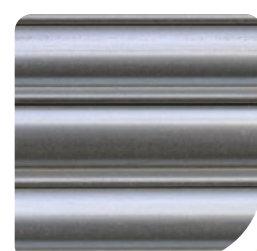
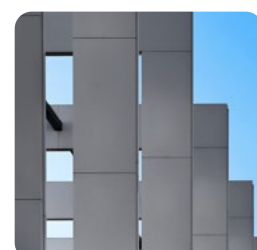
- Stainless steel self drilling screw made with BIMETAL
- Hardened surface of the thread (flexible core)
- Corrosion resistant zinc coating - minimum 12um
- The shape of the thread and its height is designed for applications into sandwich panels and steel construction
- Sharp drill point prevents surface movement
- Self vulcanizing EPDM washer - temperature and UV resistant, the special shape of the washer ensures proper seating of the sealing material on the outer cladding material fixture which guarantees a proper seal

Applications

- Supporting and cladding metal sheet to steel structures on façades or flat roof construction

Without Washer		
Code	Length mm	Quantity
5.5mm		
ONS-55040	40	200

With EPDM Washer		
Code	Length mm	Quantity
5.5mm		
ONS-55040S16	40	200



ETA-10/0183 | UKTA-22/6336



Rawlplug R-WX-48T / 55T

Self-Drill Screws for Steel / TX25 Drive

Hardened Thread / Anti-Corrosion Coating

Reduced
drilling point

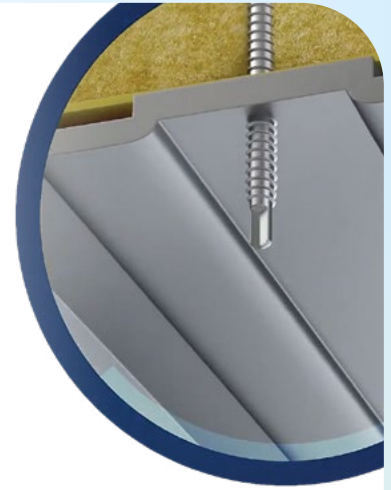
Specially designed
for metal sheets

Fast & hassle-free
installation

Approved for use in:

Metal Sheet & Profiles

Rawlplug R-WX-48T | 55T Self-Drill Screws for Steel



Screw for trapezoidal steel sheet <1.5mm

- Hardened thread surface
- High quality anti-corrosion coating guarantees resistance of 15 Kesternich cycles
- Specially designed to allow connecting to metal sheets
- Sharp drill point prevents surface movement
- Reduced drilling point ensures optimal tightness and correct hole diameter in thin metal sheets
- Possible pre-assembly with other components

Applications

- Insulation layers on flat roofs together with a appropriate telescopic or steel washer

Anti-Corrosion Coating | TORX25 Drive

Code	Length mm	Quantity
4.8mm Perimeter Fixing		
R-WX-48T050	50	250
R-WX-48T060	60	250
R-WX-48T070	70	250
R-WX-48T080	80	250
R-WX-48T100	100	200
R-WX-48T120	120	200
R-WX-48T140	140	200
R-WX-48T160	160	100
R-WX-48T180	180	100
R-WX-48T200	200	100
R-WX-48T220	220	100
R-WX-48T240	240	100
R-WX-48T260	260	100
R-WX-48T280	280	100
R-WX-48T300	300	100

A4-316 Stainless Steel | TORX25 Drive

Code	Length mm	Quantity
4.8mm Centre Fixing		
R-WX-48T080-A4	80	100
R-WX-48T100-A4	100	100
R-WX-48T120-A4	120	100
R-WX-48T140-A4	140	100
R-WX-48T160-A4	160	100
R-WX-48T180-A4	180	100
R-WX-48T200-A4	200	100
R-WX-48T220-A4	220	100
R-WX-48T240-A4	240	100
5.5mm Centre Fixing		
R-WX-55T260-A4	260	100
R-WX-55T300-A4	300	100
R-WX-55T325-A4	325	100
R-WX-55T350-A4	350	100



ETA-09/0346 | UKTA-22/6338



Rawlplug R-KC-60

Insulation Washer with Integral Cap



Quick, simple
and clean
installation

Consistent
and reliable
holding force

Approved for use in:

Metal Sheet & Profiles

Wood

Rawlplug R-KC-60 60mm Spreader Washer

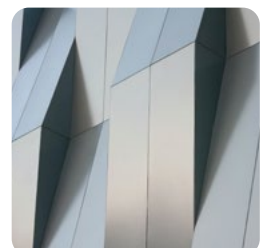
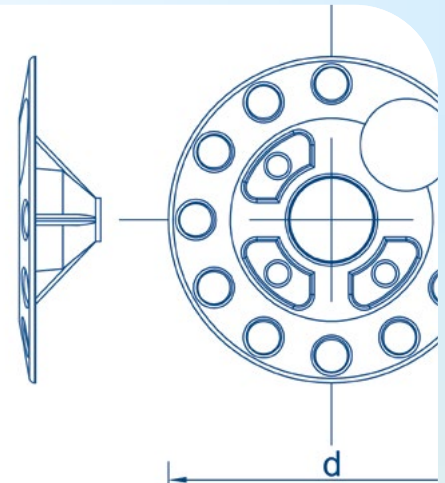
Insulation washer with integral cap suitable for attachment of insulation layers to wooden and sheet metal substrates

- Recommended for the attachment of ETICS to wooden substrates using R-PTX screws, or to sheet metal using R-WX-48T screws
- Special design of integral fastener cap allows reduction of thermal bridges.
- Consistent and reliable holding force
- Quick, simple and clean installation.
- Can be used in combination with additional KWL plate - 90, 110 or 140mm diameter

Applications

- External Thermal Insulation Composite Systems (ETICS)
- Polystyrene (EPS) boards
- Mineral Wool (MW) boards
- Polyurethane (PU) boards

Code	Diameter mm	Max Screw Size mm	Height mm	Quantity
R-KC-60	60	6	20	200



KOT-2017-0345



Rawlplug KWL-090PP

Insulation Retaining plate



For use with the KI range

Quick & Easy
application with
all ETICS fixings

Recommended
for cost-effective
applications

Approved for use in :
Polystyrene (EPS) Boards
Mineral Wool Boards

Rawlplug KWL-090PP 90mm Spreader Washer

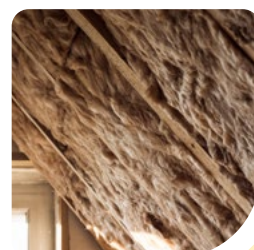
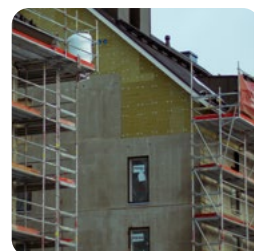
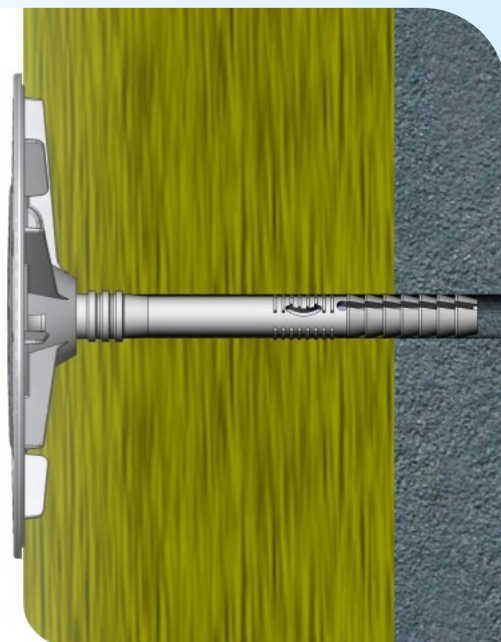
Insulation retaining plate for use in combination with facade fixings

- Quick and easy application possible with all ETICS fixings
- Polyamide standard versions are recommended for cost-effective applications
- A versatile solution for many insulation scenarios

Applications

- External Thermal Insulation Composite Systems (ETICS)
- Polystyrene (EPS) boards
- Mineral Wool (MW) boards
- Polyurethane (PU) boards

Code	Diameter mm	Quantity
KWL-090PP	90	200



ETA-07/0221 | ETA-07/0291 | ETA-07/0336 | ETA-11/0144 | ETA-13/0845



Rawlplug MKC & MKC-SS

Steel Spreader Washer for MBA

Fire-Resistant

Stainless Steel | Steel Zinc

Class A1 Fire-resistant
For applications
requiring R120

For use with
MBA & MBA-SS
range

Anti-Corrosion
Finish

Approved for use in:
Concrete C20/25 - C50/60

Solid Brick

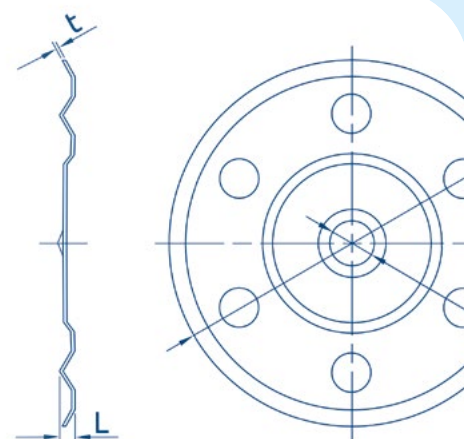
Solid Sand-lime Brick

Aerated Concrete Block

Rawlplug MKC & MKC-SS Steel Spreader Washer

Fire-resistant stainless steel washer for use in combination with metal facade fixings from MBA range

- Fire resistant washer
- Stainless steel washer (MKC-SS) for corrosion resistance
- Washer to suit all types of compressible thermal insulation materials
- Quick and easy application
- A versatile solution for many insulation scenarios

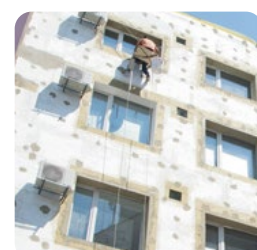


Applications

- Polystyrene (EPS) boards
- Polyurethane (PU) boards
- Mineral wool (MW) boards
- Cork boards
- Light wood wool boards

Steel Zinc		
Code	Diameter mm	Quantity
85mm		
MKC-85	85	250
35mm		
MKC-35	35	100

Stainless Steel		
Code	Diameter mm	Quantity
85mm		
MKC-SS-85	85	250
NEW A2-304 Bi-Metal		
35mm		
MKC-SS-A2	35	100

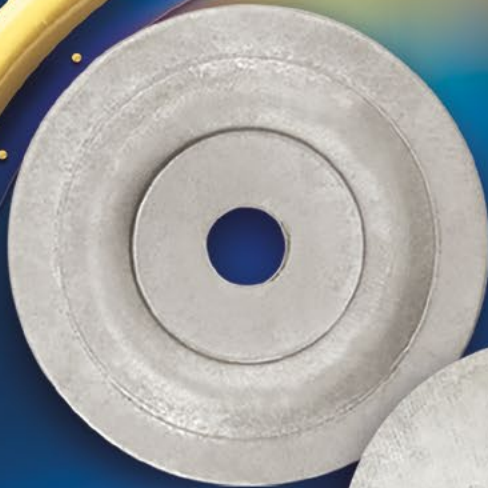


AT-15-8092/2009 | AT-15-8092/2009 - ANNEX No1 & No2



Rawlplug R-POK-ALZN

Circular Steel Washer



Zinc Plated Aluminium | 40/50/70/76mm

Fast and
hassle-free
installation

High corrosion
resistance

Versatile
applications

Approved for use in:

Metal Sheet
& Profiles

Timber

Chipboard

Plywood

Concrete

Concrete
Slab

Rawlplug R-POK-ALZN

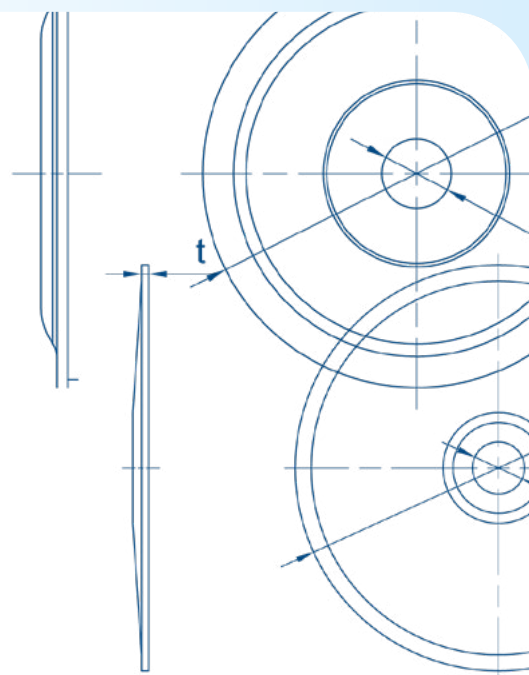
Circular steel washer

Steel washer with special form for roofing applications, for use with all types of roofing screws

- Made of aluminium & zinc sheet
- High corrosion resistance
- Specially sculpted shape for trouble-free installation using dedicated rigid mounting screws for hard roof insulation

Applications

- Systems of mechanically fastened flexible roof waterproofing membrane



Code	Diameter mm	Quantity
R-POK-041-ALZN	40	100
R-POK-050-ALZN	50	100
R-POK-070-ALZN	70	100



Code	Diameter mm	Quantity
R-POK-06-ALZN	76	100

R-RSW-SS

85mm stainless steel spreader washer for use with self-drill screws



Code	Diameter mm	Quantity
R-RSW-85-SS	85	250



ETA-09/0346 | UKTA-22/6338



THE NEW DRILL ADAPTER EXTRUSION TOOL

EFFORTLESS EXTRUSION.



FEATURES / BENEFITS

Unlimited & smooth
extrusions

No need for separate
battery tools

Saves time and energy

Easy to store when
not in use

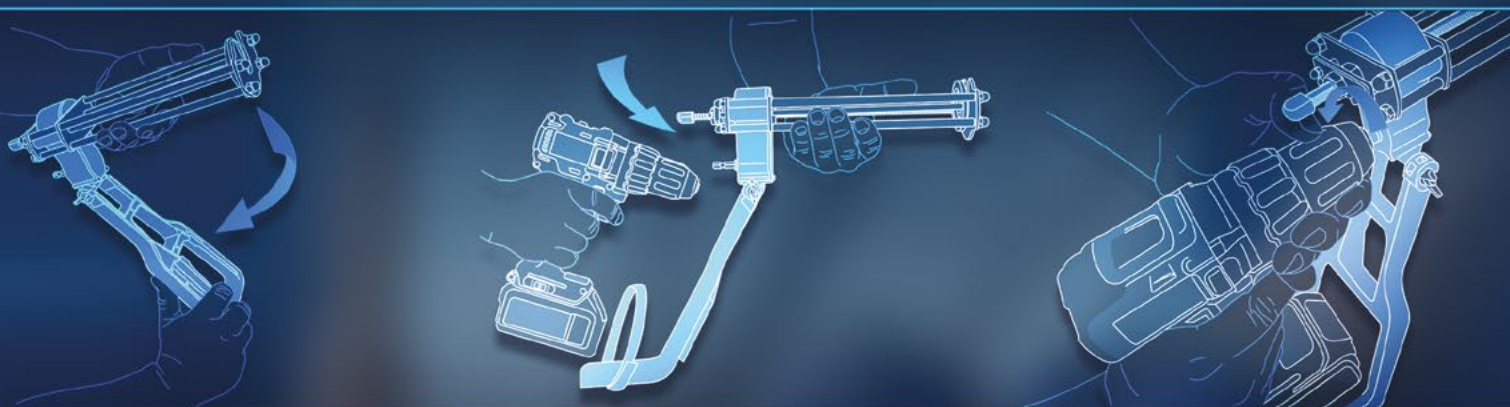
Pressure control,
with speed adjustable drills

Uses standard fittings
to fit any battery drill

Full range of sizes to suit
all cartridge types

12 Month manufacturer
warranty

QUICK, SIMPLE, READY TO GO.



380ml

Drill Adapter



600ml

Drill Adapter for Sausage



RawlDRIVER

PERFECT COMPANION TO THE RESIN DRILL ADAPTER.

LISTINGS

Code	Cartridge Size	Description	Quantity
TBC*	380/400/410ml	Drill Adapter Extrusion Tool	1
TBC*	165/290/300/310ml	Drill Adapter Extrusion Tool	1
TBC*	400/600ml Sausage	Drill Adapter for Sausage	1

* You can call us on 0141 6387 961 or email sales@rawlplug.co.uk, quoting the product description

* Drill NOT included



R-PDD18 Drill Driver 18V



Anchor Range for helping Hand Brackets to Concrete & Masonry

R-HPTIII-A4

Product features | [p.14-15](#)



Helping Hand Brackets to Concrete

High performance A4-316 stainless steel through bolt with minimum edge and axial spacing



Code	Drill Size	Length	Quantity
R-HPTIIIA4-12115/40	M12	115mm	50
R-HPTIIIA4-12125/50	M12	125mm	50

CFS+KERII + RODS / FOIL GUN / R-KER-II

Product features | [p.6-9](#)



Helping Hand Brackets to Concrete

High performance hybrid vinylester resin foil & cartridge with optimal waste reduction



Code	Type	Size	Quantity
CFS+KERII-600 + R-STUDS	Foil	600ml	1
R-CFS+KERII	Foil Gun	600ml	1
R-KER-II-400-UK	Cartridge	400ml	1

R-FFS-K-A4

Product features | [p.24-25](#)



Helping Hand Brackets to Concrete & Masonry

FFS High performance nylon frame fixing and A4-316 stainless steel screw with 40mm embedment



Code	Drill Size	Plug	Screw	Quantity
R-FFS-N-10K060-A4	M10	10 x 60mm	7 x 69mm	50

R-FF1-N-K-A4

Product features | [p.26-27](#)



Helping Hand Brackets to Concrete & Masonry

FF1 High performance nylon frame fixing for all substrates and A4-316 stainless steel screw



Code	Drill Size	Plug Length	Quantity
R-FF1-N-10K080-A4	M10	80mm	50
R-FF1-N-10K100-A4	M10	100mm	25

R-LX-HF-A4

Product features | [p.12-13](#)



Cavity Fire Brackets to Concrete

New for 2024, R-LX A4-316 stainless steel concrete screwbolt



Code	Drill Size	Size	Quantity
R-LX-05X045-HF-A4	5.0mm	6.3 x 45mm	50



Fixings for Steel Framing Systems

R-PH-LG & R-PH-HG



SFS to SFS

Low profile (pancake head) self-drill screw 1.0 to 3.0mm, also available in A2 stainless steel BIMETAL

Code	Size	Quantity
R-PH-55019-LG	5.5 x 19mm	250
R-PH-55025-LG	5.5 x 26mm	250
R-PH-55025-LG-A2	5.5 x 26mm	250
R-PH-55038-HG	5.5 x 38mm	250

New, Brackets to Light Steel Frame

NEW R-LP-55025-A2	5.5 x 26mm	200
-------------------	------------	-----

Product features | p.32-33



New R-LP-A2

Low profile head with TX25 internal drive



OCS-48 & OCS-55 & R-OCS-63



Rails to Brackets

4.8, 5.5, 6.3mm hex head BIMETAL self-drill screws with or without EPDM washer

No Washer

Code	Size	Quantity
OCS-48019	4.8 x 19mm	200
OCS-55025	5.5 x 25mm	200
OCS-55038	5.5 x 38mm	200
OCS-55050	5.5 x 50mm	100
OCS-55070	5.5 x 70mm	100

New, Greater Shear Capacity

NEW R-OCS-63038	6.3 x 38mm	100
NEW R-OCS-63050	6.3 x 50mm	100

With EPDM Washer

Code	Size	Quantity
OCS-48019S16	4.8 x 19mm	200
OCS-55025S16	5.5 x 25mm	200
OCS-55038S16	5.5 x 38mm	200
OCS-55050S16	5.5 x 50mm	100

Product features | p.34-35



ONS-55



SFS to Heavy Section Steel

5.5mm hex head A2 stainless steel BIMETAL self-drill screw, with or without EPDM washer

No Washer

Code	Size	Quantity
ONS-55040	5.5 x 40mm	100

With EPDM Washer

Code	Size	Quantity
ONS-55040S16	5.5 x 40mm	100

Product features | p.38-39





Fixings for Render & Sheathing Board to SFS & Timber Frame

R-CWT-LG & R-CWTS-LG

Product features | [p.30-31](#)

UK
CA
CE

Render / Sheathing Boards to Steel Frame

4.8mm CSK wing tip self-drill screws available in carbon steel ruspert & A2-304 BIMETAL + ruspert coating <3.5mm



Carbon Steel with Ruspert Coating

Code	Size	Quantity
R-CWT-48038-LG	4.8 x 38mm	200
R-CWT-48045-LG	4.8 x 45mm	200

A2-304 BIMETAL + Ruspert Coating

Code	Size	Quantity
R-CWTS-48038-LG	4.8 x 38mm	200

R-CBS & R-CBS-A2

Product features | [p.28-29](#)

UK
CA
CE

Render / Sheathing Boards to Steel & Timber Frames

4.5mm CSK hi-lo thread self-drill screws available in carbon steel ruspert & A2-304 BIMETAL + ruspert coating <3.5mm



Carbon Steel with Ruspert Coating

Code	Size	Quantity
R-CBS-45032	4.5 x 32mm	200
R-CBS-45042	4.5 x 42mm	200
R-CBS-45062	4.5 x 62mm	200

Carbon Steel with Ruspert Coating

Code	Size	Quantity
R-CBS-45032-A2	4.5 x 32mm	200
R-CBS-45042-A2	4.5 x 42mm	200
R-CBS-45062-A2	4.5 x 62mm	200



Insulation to Concrete & Masonry

KI-10

Product features | [p.16-17](#)

UK
CA
ETA
CE

Insulation to Concrete & Masonry Perimeter Fixing

Plastic pin fixing for perimeter fixing on maximum insulation of 190mm



Code	Drill Size	Length	Plate Diameter	Fixture Thickness	Quantity
KI-070	10mm	70mm	60mm	35mm	250
KI-090	10mm	90mm	60mm	55mm	250
KI-120	10mm	120mm	60mm	85mm	250
KI-140	10mm	140mm	60mm	105mm	250
KI-160	10mm	160mm	60mm	125mm	250
KI-180	10mm	180mm	60mm	145mm	250
KI-200	10mm	200mm	60mm	165mm	250
KI-220	10mm	220mm	60mm	185mm	250

Insulation to Concrete & Masonry *(Continued)*

KI-10N



Insulation to Concrete & Masonry Perimeter Fixing

Metal pin fixing for perimeter fixing on maximum insulation of 275mm

Product features | p.18-19



Code	Drill Size	Length	Plate Diameter	Fixture Thickness	Quantity
KI-120N	10mm	120mm	60mm	60mm	250
KI-140N	10mm	140mm	60mm	70mm	250
KI-160N	10mm	160mm	60mm	90mm	250
KI-180N	10mm	180mm	60mm	110mm	250
KI-200N	10mm	200mm	60mm	130mm	250
KI-220N	10mm	220mm	60mm	150mm	250
KI-260N	10mm	260mm	60mm	190mm	200
KI-300N	10mm	300mm	60mm	210mm	200

R-TFIX-8S



Insulation to Concrete & Masonry Perimeter Fixing

Metal screw fixing for perimeter fixing on maximum insulation of 430mm

Product features | p.20-21



Price & Availability per Enquiry

Please contact your Area Sales Manager or call 0141 638 7961

KWL-090PP



90mm Spreader Washer for KI-10 / KI-10N / R-TFIX-8S

Spreader washer for all concrete & masonry perimeter fixings

Product features | p.44-45



Code	Size	Quantity
KWL-090PP	90mm	200



Insulation to Concrete & Masonry *(Continued)*

MBA & MBA-SS

Product features | [p.22-23](#)



Insulation to Concrete & Masonry Centre Fixing

Centre fixing with fire rating (tested up to 120mins)
available in carbon steel zinc & stainless steel



Carbon Steel Zinc - Maximum Insulation of 270mm

	Code	Drill Size	Length	Plate Diameter	Quantity
	MBA-08090	8mm	90mm	40mm	250
	MBA-08110	8mm	110mm	40mm	250
	MBA-08140	8mm	140mm	40mm	250
	MBA-08170	8mm	170mm	40mm	250
	MBA-08200	8mm	200mm	40mm	250
NEW	R-MBA-08210	8mm	210mm	40mm	250
NEW	R-MBA-08230	8mm	230mm	40mm	250
	MBA-08250	8mm	250mm	40mm	125
	MBA-08300	8mm	300mm	40mm	125

Stainless Steel - Maximum Insulation of 270mm

	Code	Drill Size	Length	Plate Diameter	Quantity
	MBA-SS-08090	8mm	90mm	40mm	250
	MBA-SS-08110	8mm	110mm	40mm	250
	MBA-SS-08140	8mm	140mm	40mm	250
	MBA-SS-08170	8mm	170mm	40mm	250
	MBA-SS-08200	8mm	200mm	40mm	250
	MBA-SS-08250	8mm	250mm	40mm	125
	MBA-SS-08300	8mm	300mm	40mm	125
NEW	MBA-SS-08330	8mm	330mm	40mm	125
NEW	MBA-SS-08370	8mm	370mm	40mm	125
NEW	MBA-SS-08400	8mm	400mm	40mm	250

MKC & MKC-SS

Product features | [p.46-47](#)



Spreader Washer for MBA & MBA-SS

85mm washer for centre fixing with fire rating (tested up
to 120mins) available in carbon steel zinc & stainless steel



Steel Zinc

	Code	Diameter	Quantity
	MKC-85	85mm	250
	MKC-35	35mm	100

Stainless Steel

	Code	Diameter	Quantity
	MKC-SS-85	85mm	250

New A2-304 BIMETAL

NEW	MKC-035-A2	35mm	100
-----	------------	------	-----

Insulation to Concrete & Masonry *(Continued)*

R-KCX-A2

UK
CA
CE **Insulation to Concrete & Masonry Centre Fixing**
Stainless steel tube for use with R-WBT-61 concrete screws, maximum insulation of 600mm



Code	Price & Availability per Enquiry
R-KCX-155-A2	Please contact your Area Sales Manager or call 0141 638 7961
R-KCX-255-A2	

R-KCX-W-A2 & R-KCX-CAP-A2

UK
CA
CE **70mm Spreader Washer & Cap for R-KCX-A2**
Stainless steel spreader washer & optional cover cap for centre fixing



Code	Price & Availability per Enquiry
R-KCX-70W-A2	Please contact your Area Sales Manager or call 0141 638 7961
R-KCX-CAP-A2	

Insulation to SFS & Sheathing Boards

R-WX & R-WX-A4

Product features | **p.40-41**

UK
CA
ETA
CE **Insulation to Render / Sheathing Boards & Steel Frame**
Self-drill CSK screw for perimeter & centre fixing, available in high quality anti-corrosion coating & A4 stainless steel



4.8mm, Perimeter Fixing, Anti-Corrosion Coating, TORX25 Drive

Code	Length	Quantity
R-WX-48T050	50mm	250
R-WX-48T060	60mm	250
R-WX-48T070	70mm	250
R-WX-48T080	80mm	250
R-WX-48T100	100mm	200
R-WX-48T120	120mm	200
R-WX-48T140	140mm	200
R-WX-48T160	160mm	100
R-WX-48T180	180mm	100
R-WX-48T200	200mm	100
R-WX-48T220	220mm	100
R-WX-48T240	240mm	100
R-WX-48T260	260mm	100
R-WX-48T280	280mm	100
R-WX-48T300	300mm	100

4.8mm, Centre Fixing, A4-316 Stainless Steel, TORX25 Drive

Code	Length	Quantity
R-WX-48T080-A4	80mm	100
R-WX-48T100-A4	100mm	100
R-WX-48T120-A4	120mm	100
R-WX-48T140-A4	140mm	100
R-WX-48T160-A4	160mm	100
R-WX-48T180-A4	180mm	100
R-WX-48T200-A4	200mm	100
R-WX-48T220-A4	220mm	100
R-WX-48T240-A4	240mm	100
5.5mm		
R-WX-55T260-A4	260mm	100
R-WX-55T300-A4	300mm	100
R-WX-55T325-A4	325mm	100
R-WX-55T350-A4	350mm	100



Insulation to SFS & Sheathing Boards *(Continued)*

R-KC-60

Product features | [p.42-43](#)



Insulation to Render / Sheathing Boards & Steel Frame

Capped washer for use with R-WX-48T self-drill screws for perimeter fixing



Code	Diameter	Max Screw Size	Height	Quantity
R-KC-60	60mm	6mm	20mm	200

KWL-090PP

Product features | [p.44-45](#)



Insulation to Render / Sheathing Boards & Steel Frame

90mm Spreader washer for all SFS / sheathing board perimeter fixings



Code	Size	Quantity
KWL-090PP	90mm	200

OCS-55/63

Product features | [p.36-37](#)



Insulation to Render / Sheathing Boards & Steel Frame

6.3mm Carbon steel & A2 stainless steel BIMETAL hex head self-drill screws for centre fixing



6.3mm, A2 Stainless Steel, Anti-Corrosion

Code	Length	Quantity
OCS-55/63090	90mm	100
OCS-55/63110	110mm	100
OCS-55/63130	130mm	100
OCS-55/63150	150mm	100
OCS-55/63170	170mm	100
R-OCS-55/63200	200mm	100
OCS-55/63230	230mm	100
R-OCS-55/63270	270mm	100
R-OCS-55/63300	300mm	100

6.3mm, Carbon Steel, Anti-Corrosion

Code	Length	Quantity
R-OC-55/63080G16	80mm	100
R-OC-55/63105G16	105mm	100
R-OC-55/63135G16	135mm	100
R-OC-55/63150G16	150mm	100

R-RSW-SS



Insulation to Render / Sheathing Boards & Steel Frame

85mm stainless steel spreader washer for use with self-drill screws



Code	Diameter	Quantity
R-RSW-85-SS	85mm	250

Soffit Liner Boards to Concrete

R-WBT

Product features | p.10-11



Soffit Liner to Concrete

6.1mm concrete screw with high quality anti-corrosion zinc-flake coating, TORX25 drive



Code	Drill Size	Size	Quantity
R-WBT-61050	6.1mm	50mm	100
R-WBT-61075	6.1mm	75mm	100
R-WBT-61090	6.1mm	90mm	100
R-WBT-61100	6.1mm	100mm	100
R-WBT-61120	6.1mm	120mm	100
R-WBT-61140	6.1mm	140mm	100
R-WBT-61160	6.1mm	160mm	100
R-WBT-61H160	6.1mm	160mm	100 <i>Clearance</i>
R-WBT-61180	6.1mm	180mm	100
R-WBT-61H180	6.1mm	180mm	100 <i>Clearance</i>
R-WBT-61200	6.1mm	200mm	100
R-WBT-61220	6.1mm	220mm	100
R-WBT-61240	6.1mm	240mm	100
R-WBT-61260	6.1mm	260mm	100
R-WBT-61300	6.1mm	300mm	100
R-WBT-61350	6.1mm	350mm	100
R-WBT-61400	6.1mm	400mm	100

R-POK-ALZN

Product features | p.48-49



Soffit Liner to Concrete

Aluminium spreader washers with anti-corrosion zinc plating, for use with R-WBT concrete screws



Code	Size	Quantity	Code	Size	Quantity
R-POK-041-ALZN	40mm	100	R-POK-06-ALZN	76mm	100
R-POK-050-ALZN	50mm	100			
R-POK-070-ALZN	70mm	100			

TORX 25 Screwdriver Bits



T Type Precision Milled & Special Long Screwdriver Bits



Code	Length	Quantity	Code	Length	Quantity
RT-BIT-TORX25X3	25mm	3	RT-BIT-TORX25/100	100mm	1
RT-BIT-TORX25/25	25mm	20	RT-BIT-TORX25/150	150mm	1
			RT-BIT-TORX25/200	200mm	1
			RT-BIT-TORX25/250	250mm	1
			RT-BIT-TORX25/350	350mm	1
			RT-BIT-TORX25/450	450mm	1



Mineral Wool Rainscreen Slab to Concrete

PLASTIC PERIMETER FIXING



Façade fixings with plastic and metal pin and plastic washer

		
KI-10 Product Features p.16-17	KI-10N Product Features p.18-19	KWL-090PP Product Features p.44-45

Insulation Thickness	Fixing Combination
40mm	KI-070 + KWL-090PP
50mm	KI-090 + KWL-090PP
60mm	KI-090 + KWL-090PP
70mm	KI-120 + KWL-090PP
80mm	KI-120 + KWL-090PP
90mm	KI-120 + KWL-090PP
100mm	KI-140 + KWL-090PP
110mm	KI-140 + KWL-090PP
120mm	KI-160 + KWL-090PP
130mm	KI-160 + KWL-090PP
140mm	KI-180 + KWL-090PP
150mm	KI-180 + KWL-090PP
160mm	KI-200 + KWL-090PP
170mm	KI-200 + KWL-090PP
180mm	KI-220 + KWL-090PP
190mm	KI-220 + KWL-090PP
200mm	KI-260N + KWL-090PP
210mm	KI-260N + KWL-090PP
220mm	KI-260N + KWL-090PP
230mm	KI-260N + KWL-090PP
240mm	KI-300N + KWL-090PP
250mm	KI-300N + KWL-090PP
260mm	KI-300N + KWL-090PP
270mm	KI-300N + KWL-090PP
280mm	TBA
290mm	TBA
300mm	TBA
310mm	TBA
320mm	TBA
330mm	TBA
340mm	TBA
350mm	TBA



Mineral Wool Rainscreen Slab to Concrete

STAINLESS STEEL CENTRE FIXING



Stainless steel façade fixings and washers



MBA-SS

Product Features | [p.22-23](#)



MKC-SS

Product Features | [p.46-47](#)

Insulation Thickness	Fixing Combination <i>Standard Embedment 40mm</i>
40mm	MBA-SS-08090 + MKC-SS-85
50mm	MBA-SS-08090 + MKC-SS-85
60mm	MBA-SS-08110 + MKC-SS-85
70mm	MBA-SS-08110 + MKC-SS-85
80mm	MBA-SS-08140 + MKC-SS-85
90mm	MBA-SS-08140 + MKC-SS-85
100mm	MBA-SS-08140 + MKC-SS-85
110mm	MBA-SS-08170 + MKC-SS-85
120mm	MBA-SS-08170 + MKC-SS-85
130mm	MBA-SS-08170 + MKC-SS-85
140mm	MBA-SS-08200 + MKC-SS-85
150mm	MBA-SS-08200 + MKC-SS-85
160mm	MBA-SS-08200 + MKC-SS-85
170mm	MBA-SS-08250 + MKC-SS-85
180mm	MBA-SS-08250 + MKC-SS-85
190mm	MBA-SS-08250 + MKC-SS-85
200mm	MBA-SS-08250 + MKC-SS-85
210mm	MBA-SS-08250 + MKC-SS-85
220mm	MBA-SS-08300 + MKC-SS-85
230mm	MBA-SS-08300 + MKC-SS-85
240mm	MBA-SS-08300 + MKC-SS-85
250mm	MBA-SS-08300 + MKC-SS-85
260mm	MBA-SS-08300 + MKC-SS-85
270mm	TBA
280mm	TBA
290mm	TBA
300mm	TBA
310mm	TBA
320mm	TBA
330mm	TBA
340mm	TBA
350mm	TBA

Insulation Thickness	Fixing Combination <i>Reduced Embedment 30mm</i>
40mm	MBA-SS-08090 + MKC-SS-85
50mm	MBA-SS-08090 + MKC-SS-85
60mm	MBA-SS-08090 + MKC-SS-85
70mm	MBA-SS-08110 + MKC-SS-85
80mm	MBA-SS-08110 + MKC-SS-85
90mm	MBA-SS-08140 + MKC-SS-85
100mm	MBA-SS-08140 + MKC-SS-85
110mm	MBA-SS-08140 + MKC-SS-85
120mm	MBA-SS-08170 + MKC-SS-85
130mm	MBA-SS-08170 + MKC-SS-85
140mm	MBA-SS-08170 + MKC-SS-85
150mm	MBA-SS-08200 + MKC-SS-85
160mm	MBA-SS-08200 + MKC-SS-85
170mm	MBA-SS-08200 + MKC-SS-85
180mm	MBA-SS-08250 + MKC-SS-85
190mm	MBA-SS-08250 + MKC-SS-85
200mm	MBA-SS-08250 + MKC-SS-85
210mm	MBA-SS-08250 + MKC-SS-85
220mm	MBA-SS-08250 + MKC-SS-85
230mm	MBA-SS-08300 + MKC-SS-85
240mm	MBA-SS-08300 + MKC-SS-85
250mm	MBA-SS-08300 + MKC-SS-85
260mm	MBA-SS-08300 + MKC-SS-85
270mm	MBA-SS-08300 + MKC-SS-85
280mm	TBA
290mm	TBA
300mm	TBA
310mm	TBA
320mm	TBA
330mm	TBA
340mm	TBA
350mm	TBA



Mineral Wool Rainscreen Slab to LSF / Sheathing Board

PLASTIC PERIMETER FIXING



High quality anti-corrosion self-drill screw & plastic capped / plastic washer combination allows for 12.5mm sheathing board + 1.5mm steel frame

		
R-WX-48T Product Features p.40-41	R-KC-60 (Capped Washer) Product Features p.42-43	KWL-090PP Product Features p.44-45

Insulation Thickness	Fixing Combination
40mm	R-KC-60 + KWL-090PP + R-WX-48T070
50mm	R-KC-60 + KWL-090PP + R-WX-48T080
60mm	R-KC-60 + KWL-090PP + R-WX-48T100
70mm	R-KC-60 + KWL-090PP + R-WX-48T100
80mm	R-KC-60 + KWL-090PP + R-WX-48T120
90mm	R-KC-60 + KWL-090PP + R-WX-48T120
100mm	R-KC-60 + KWL-090PP + R-WX-48T140
110mm	R-KC-60 + KWL-090PP + R-WX-48T140
120mm	R-KC-60 + KWL-090PP + R-WX-48T160
130mm	R-KC-60 + KWL-090PP + R-WX-48T160
140mm	R-KC-60 + KWL-090PP + R-WX-48T180
150mm	R-KC-60 + KWL-090PP + R-WX-48T180
160mm	R-KC-60 + KWL-090PP + R-WX-48T200
170mm	R-KC-60 + KWL-090PP + R-WX-48T200
180mm	R-KC-60 + KWL-090PP + R-WX-48T220
190mm	R-KC-60 + KWL-090PP + R-WX-48T220
200mm	R-KC-60 + KWL-090PP + R-WX-48T240
210mm	R-KC-60 + KWL-090PP + R-WX-48T240
220mm	R-KC-60 + KWL-090PP + R-WX-48T260
230mm	R-KC-60 + KWL-090PP + R-WX-48T260
240mm	R-KC-60 + KWL-090PP + R-WX-48T300
250mm	R-KC-60 + KWL-090PP + R-WX-48T300
260mm	R-KC-60 + KWL-090PP + R-WX-48T300
270mm	R-KC-60 + KWL-090PP + R-WX-48T300
280mm	TBA
290mm	TBA
300mm	TBA
310mm	TBA
320mm	TBA
330mm	TBA
340mm	TBA
350mm	TBA



Mineral Wool Rainscreen Slab to LSF / Sheathing Board

STAINLESS STEEL CENTRE FIXING



Stainless steel self-drill screw & washer combination allows for 12.5mm sheathing board + 1.5mm steel frame



OCS-55/63

Product Features | [p.36-37](#)

R-RSW-85-SS

Product Features | [p.48-49](#)

Insulation Thickness	Fixing Combination
40mm	OCS-55/63090 + R-RSW-85-SS
50mm	OCS-55/63090 + R-RSW-85-SS
60mm	OCS-55/63090 + R-RSW-85-SS
70mm	OCS-55/63110 + R-RSW-85-SS
80mm	OCS-55/63110 + R-RSW-85-SS
90mm	OCS-55/63130 + R-RSW-85-SS
100mm	OCS-55/63130 + R-RSW-85-SS
110mm	OCS-55/63150 + R-RSW-85-SS
120mm	OCS-55/63150 + R-RSW-85-SS
130mm	OCS-55/63170 + R-RSW-85-SS
140mm	OCS-55/63170 + R-RSW-85-SS
150mm	R-OCS-55/63200 + R-RSW-85-SS
160mm	R-OCS-55/63200 + R-RSW-85-SS
170mm	R-OCS-55/63200 + R-RSW-85-SS
180mm	OCS-55/63230 + R-RSW-85-SS
190mm	OCS-55/63230 + R-RSW-85-SS
200mm	OCS-55/63230 + R-RSW-85-SS
210mm	R-OCS-55/63270 + R-RSW-85-SS
220mm	R-OCS-55/63270 + R-RSW-85-SS
230mm	R-OCS-55/63270 + R-RSW-85-SS
240mm	R-OCS-55/63270 + R-RSW-85-SS
250mm	R-OCS-55/63300 + R-RSW-85-SS
260mm	R-OCS-55/63300 + R-RSW-85-SS
270mm	R-OCS-55/63300 + R-RSW-85-SS
280mm	TBA
290mm	TBA
300mm	TBA
310mm	TBA
320mm	TBA
330mm	TBA
340mm	TBA
350mm	TBA



Soft Faced Mineral Wool Soffit Slab to Concrete

SOFFIT SLAB TO CONCRETE SUBSTRATES



Zinc flake coated anti-corrosion concrete screw & washer combination



R-WBT-61

Product Features | [p.10-11](#)



R-POK-06-ALZN

Product Features | [p.48-49](#)

Insulation Thickness

Fixing Combination

40mm	R-WBT-61075 + R-POK-06-ALZN
50mm	R-WBT-61090 + R-POK-06-ALZN
60mm	R-WBT-61090 + R-POK-06-ALZN
70mm	R-WBT-61120 + R-POK-06-ALZN
80mm	R-WBT-61120 + R-POK-06-ALZN
90mm	R-WBT-61120 + R-POK-06-ALZN
100mm	R-WBT-61140 + R-POK-06-ALZN
110mm	R-WBT-61140 + R-POK-06-ALZN
120mm	R-WBT-61160 + R-POK-06-ALZN
130mm	R-WBT-61160 + R-POK-06-ALZN
140mm	R-WBT-61180 + R-POK-06-ALZN
150mm	R-WBT-61180 + R-POK-06-ALZN
160mm	R-WBT-61200 + R-POK-06-ALZN
170mm	R-WBT-61200 + R-POK-06-ALZN
180mm	R-WBT-61220 + R-POK-06-ALZN
190mm	R-WBT-61220 + R-POK-06-ALZN
200mm	R-WBT-61240 + R-POK-06-ALZN
210mm	R-WBT-61240 + R-POK-06-ALZN

Insulation Thickness

Fixing Combination (Continued)

220mm	R-WBT-61260 + R-POK-06-ALZN
230mm	R-WBT-61260 + R-POK-06-ALZN
240mm	R-WBT-61300 + R-POK-06-ALZN
250mm	R-WBT-61300 + R-POK-06-ALZN
260mm	R-WBT-61300 + R-POK-06-ALZN
270mm	R-WBT-61300 + R-POK-06-ALZN
280mm	R-WBT-61350 + R-POK-06-ALZN
290mm	R-WBT-61350 + R-POK-06-ALZN
300mm	R-WBT-61350 + R-POK-06-ALZN
310mm	R-WBT-61350 + R-POK-06-ALZN
320mm	R-WBT-61350 + R-POK-06-ALZN
330mm	R-WBT-61400 + R-POK-06-ALZN
340mm	R-WBT-61400 + R-POK-06-ALZN
350mm	R-WBT-61400 + R-POK-06-ALZN
360mm	R-WBT-61400 + R-POK-06-ALZN
370mm	R-WBT-61400 + R-POK-06-ALZN

FIRE RESISTANCE REPORT FOR R-WBT-61 & R-POK-06-ALZN



Resistance to Fire

R30	Load Characteristic	(kN)	0.09
R60	in Tension	(kN)	0.09
R90	FRK,f1	(kN)	0.09
R120		(kN)	0.08
Axial Spacing	Scr,f1	(mm)	4 x hef
Edge Distance	Ccr,f1	(mm)	2 x hef

R-WBT & R-POK-06

In case of fire from more than one direction, distance to the edge should be 300mm+

Recommended partial safety factor : $\gamma_{m,fi} = 1.0$; $h_{ef} = 25mm$



Soft Faced Mineral Wool Soffit Slab to Concrete

SOFFIT SLAB TO CONCRETE SUBSTRATES DUAL OPTIONS



Steel zinc (MBA / MKC) or stainless steel (MBA-SS / MKC-SS)
façade fixings & washers



MBA & MBA-SS

Product Features | [p.22-23](#)

MKC & MKC-SS

Product Features | [p.46-47](#)

Steel Zinc

Insulation Thickness	Fixing Combination
40mm	MBA-08090 + MKC-85
50mm	MBA-08090 + MKC-85
60mm	MBA-08110 + MKC-85
70mm	MBA-08110 + MKC-85
80mm	MBA-08140 + MKC-85
90mm	MBA-08140 + MKC-85
100mm	MBA-08140 + MKC-85
110mm	MBA-08170 + MKC-85
120mm	MBA-08170 + MKC-85
130mm	MBA-08170 + MKC-85
140mm	MBA-08200 + MKC-85
150mm	MBA-08200 + MKC-85
160mm	MBA-08200 + MKC-85
170mm	MBA-08250 + MKC-85
180mm	MBA-08250 + MKC-85
190mm	MBA-08250 + MKC-85
200mm	MBA-08250 + MKC-85
210mm	MBA-08250 + MKC-85
220mm	MBA-08300 + MKC-85
230mm	MBA-08300 + MKC-85
240mm	MBA-08300 + MKC-85
250mm	MBA-08300 + MKC-85
260mm	MBA-08300 + MKC-85

Stainless Steel

Insulation Thickness	Fixing Combination
40mm	MBA-SS-08090 + MKC-SS-85
50mm	MBA-SS-08090 + MKC-SS-85
60mm	MBA-SS-08110 + MKC-SS-85
70mm	MBA-SS-08110 + MKC-SS-85
80mm	MBA-SS-08140 + MKC-SS-85
90mm	MBA-SS-08140 + MKC-SS-85
100mm	MBA-SS-08140 + MKC-SS-85
110mm	MBA-SS-08170 + MKC-SS-85
120mm	MBA-SS-08170 + MKC-SS-85
130mm	MBA-SS-08170 + MKC-SS-85
140mm	MBA-SS-08200 + MKC-SS-85
150mm	MBA-SS-08200 + MKC-SS-85
160mm	MBA-SS-08200 + MKC-SS-85
170mm	MBA-SS-08250 + MKC-SS-85
180mm	MBA-SS-08250 + MKC-SS-85
190mm	MBA-SS-08250 + MKC-SS-85
200mm	MBA-SS-08250 + MKC-SS-85
210mm	MBA-SS-08250 + MKC-SS-85
220mm	MBA-SS-08300 + MKC-SS-85
230mm	MBA-SS-08300 + MKC-SS-85
240mm	MBA-SS-08300 + MKC-SS-85
250mm	MBA-SS-08300 + MKC-SS-85
260mm	MBA-SS-08300 + MKC-SS-85

The insulation fixing options listed are for guidance only and care should be taken to follow the insulation manufacturers guidance with regards to fixing patterns and the level of corrosion resistance required for the application.

The use of a spreader washer is predominantly for mineral wool type insulation slabs. Where a phenolic or rigid insulation is being used there may not be a requirement for the additional washer but guidance should be sought from the relevant insulation manufacturer.

Load values for the MBA at reduced embedment are available on request.



High Impact Soffit Slab to Concrete

HIGH IMPACT SOFFIT SLAB TO CONCRETE SUBSTRATES



Zinc flake coated anti-corrosion concrete screw & washer combination



R-WBT-61

Product Features | [p.10-11](#)

R-POK-041-ALZN

Product Features | [p.48-49](#)

Insulation Thickness	Fixing Combination
136mm	R-WBT-61180 + R-POK-041-ALZN
166mm	R-WBT-61200 + R-POK-041-ALZN
191mm	R-WBT-61220 + R-POK-041-ALZN
226mm	R-WBT-61260 + R-POK-041-ALZN

HIGH IMPACT SOFFIT SLAB TO CONCRETE SUBSTRATES



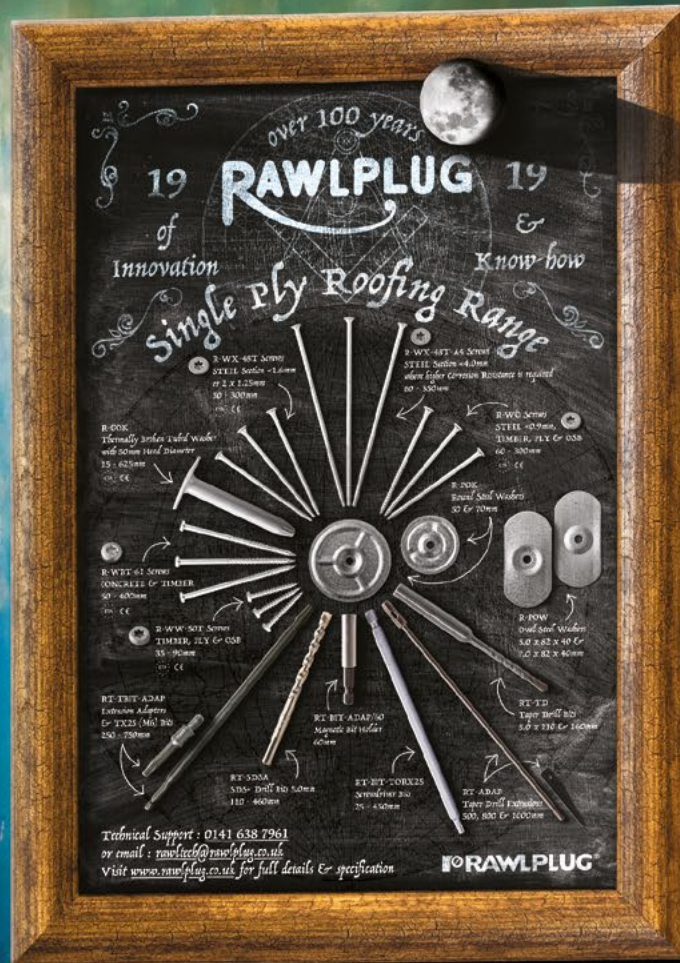
Steel zinc (MBA) or stainless steel (MBA-SS) façade fixings



MBA & MBA-SS

Product Features | [p.22-23](#)

Insulation Thickness	Fixing Combination
136mm	MBA-08170 / MBA-SS-08170
166mm	MBA-08250 / MBA-SS-08250
191mm	MBA-08250 / MBA-SS-08250
226mm	MBA-08300 / MBA-SS-08300



Respecting our roots.

Get up-close and personal.

Enquire about our newly designed
display boards, showcasing a range
of physical items.

Onsite Technical Support

Technical advisory provided by local engineering teams to tackle all technical challenges, particularly with regards to on-site strength testing of the Rawlplug® products under real-life operating conditions.

- Technical support offered by our engineers on a local basis, on the given construction investment's location.
- Site testing of the Rawlplug® products under real-life operating conditions.
- Signature standard based on EAD, BS:8539 and the relevant recommendations of the British Construction Fixings Association.
- Repeated testing to confirm reliability of original test results.
- Detailed reports taking all technical parameters and our experts' individual recommendations into consideration.
- CFA (Construction Fixing Association) accredited on-site testing

Technical Helpdesk

Consultations and technical/design support provided by the Technical Department's engineers, practitioners and market experts.

- Technical and design-related consultations with our Technical Department's engineers.
- Systematic and structured handling of problem-solving tasks, thanks to forms dedicated to specific applications and products.
- Personalised design assistance with the specificity and requirements of individual solutions in mind.

HOW TO SUBMIT ENQUIRIES?

Enquiries are submitted via Rawlplug's website. You simply need to pick the right form, enter your data and information about your project, and submit the enquiry form. Our employees contact the website using the RTH tab of our corporate portal.

The new format is user-friendly, and it provides our engineers with enhanced tools, since now they have access to all enquiries at one place.



Easy Fix

Design calculations required to plan fixings for diverse construction elements using Rawlplug® branded products.

- Proprietary and free-of-charge application for design calculations, responding to even the most specific requirements of construction investments.
- Divided into subject-specific modules dedicated to individual segments of construction works.
- Based on the latest EAD, ETAG and EUROCODE guidelines, ensuring that calculations conform to the standards, that they are precise and highly useful.
- Highly specialised features combined with simplicity and intuitiveness of use to support every designer and ensure safety of the solutions being designed.

ACCESS TO EASYFIX

The EasyFix application is free to download and use. You can download the software from www.easyfix.rawlplug.com/en OR click link below

Product Selector

Appropriate selection of products to match specific applications by taking the project's requirements and particular requirements into account.

- Possibility to choose products from among 10 product categories in a selection-assisted process.
- Numerous convenient product browsing options relevant from the intended use perspective.
- Transparent and highly functional presentation of useful information.
- Option to enquire about product availability or specific properties.

BIM

Automatic implementation of models and technical drawings of the Rawlplug® fixings in the BIM/CAD design environment.

- Proprietary application enabling models and technical drawings of the Rawlplug® fixings to be downloaded and embedded in designs.
- Comprehensive sets of product data making design-related decisions easier.
- Models and drawings available in 2D and 3D, in 6 projections and the 360° view mode.
- Available on-line or ready to download and implement in the BIM/CAD environment.

ACCESS TO SOFTWARE

There are two ways to use BIM:

1. Integration of Rawlplug BIM via Autodesk® Revit®

Download the plug-in from rawlplug.com in the Services/Design & Software tab.

2. Using on-line software

BIM Rawlplug is an application that can be downloaded from the Services/Design & Software tab on rawlplug.com. It may be used by anyone who intends to browse through and become familiar with the models, drawings and information the system provides, without being forced to register and subsequently log on.

Technical Library

Complete portfolio of technical documentation required to place the products on the market as well as to select and use them in the right manner.

- Option to pick from among 15 categories of information and documents required to make the right choice of the brand's products and to use them correctly.
- Complete set of product-specific technical and commercial documents.
- Original documents as well as documentation required for legal purposes, enabling distribution, designing and use of fixing solutions.



INDEX



SEARCH

Bonded Anchors	Pages
R-CFS+ KERII + R-STUDS	06 07 52
R-KERII	08 09 52

Concrete Screws	
R-WBT-61	10 11 59 61 66

Concrete Screwbolts	
R-LX-HF-A4	12 13 52

Concrete Throughbolts	
R-HPTIII-A4	14 15 52

Façade Fixings	
KI-10	16 17 54 60
KI-10N	18 19 55 60
R-TFIX-85	20 21 55

Steel Façade Fixings	
R-KCX-A2	11 57
MBA	22 23 56 65 66
MBA-SS	22 23 56 61 65 66

Frame Fixings	
R-FFS-K-A4	24 25 52
R-FF1-N-K-A4	26 27 52

Self-Drill Screws	Page/s
R-CBS-45	28 29 54
R-CBS-45 -A2	28 29 54
R-CWT-LG	30 31 54
R-CWTS-LG	30 31 54
R-PH-LG	32 33 53
R-PH-HG	32 33 53
OCS-48	34 35 53
OCS-55	34 35 53
R-OCS-63	34 35 53
OCS-55/63	36 37 58 63
ONS-55	38 39 53
R-WX-48T	40 41 57 62
R-WX-48T-A4	40 41
R-WX-55T-A4	40 41

Spreader Washers	
R-KC-60	42 43 58 62
KWL-090PP	44 45 55 58 60 62

Steel Spreader Washers	
R-KCX-70W-A2	57
R-KCX-CAP-A2 (Cap)	57
MKC	46 47 56 65
MKC-SS	46 47 56 61 65
R-POK-ALZN	48 49 59 66
R-POK-06-ALZN	48 49 59 64
R-RSW-85-SS	48 49 58 63

Resin Extrusion Tools & Foil Gun	
R-CFS+KERII	07 52
DRILL ADAPTER	50 51

TORX 25 Screwdriver Bits	
RT-BIT-TORX25	13

We are
RAWLPLUG®



CONTACT DETAILS

TECHNICAL ADVISORY SERVICES

by Telephone

+44 (0) 141 638 7961

by Email

rawltech@rawlplug.co.uk

SALES & CUSTOMER SERVICES

by Telephone

+44 (0) 141 638 2255

by Email

sales@rawlplug.co.uk

FINANCE

by Telephone

+44 (0) 141 638 7961

by Email

accounts@rawlplug.co.uk

GENERAL INFORMATION

by Telephone

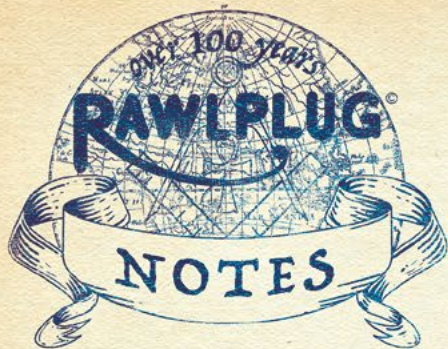
+44 (0) 141 638 7961

by Email

rawlinfo@rawlplug.co.uk

UK DELIVERY

Please contact our customer service team
for UK delivery options and up-to-date pricing
on 24hr and 48hr deliveries.



.....

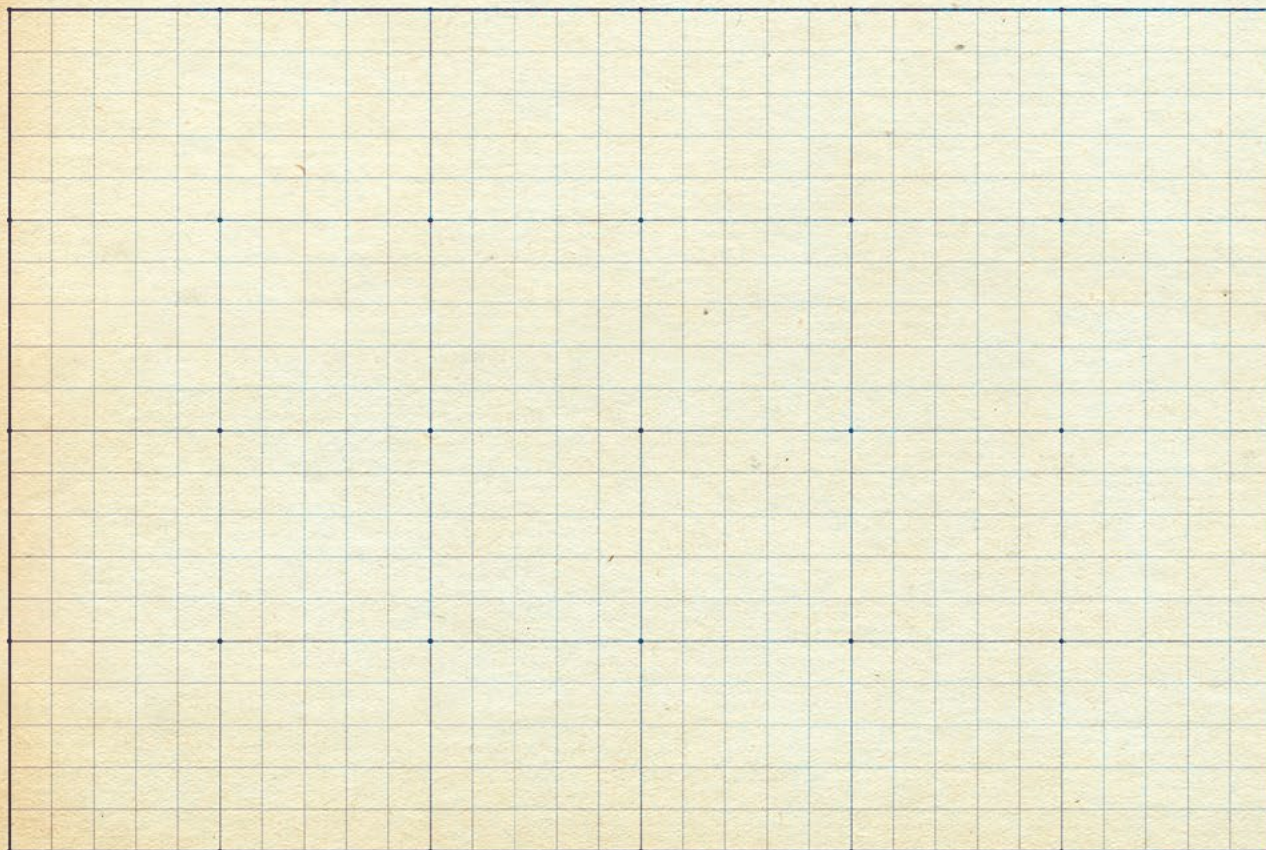
.....

.....

.....

.....

.....



TERMS & CONDITIONS OF SALE

1. DEFINITIONS

In these conditions "Rawlplug" shall mean Rawlplug Limited; "the Goods" shall mean the products supplied or to be supplied by Rawlplug under any Contract; "the Customer" shall mean the company firm or person buying the Goods from Rawlplug under any Contract and "Contract" shall mean a contract between Rawlplug and the Customer for the sale and purchase of the Goods.

2. APPLICATION OF CONDITIONS

All Goods supplied by Rawlplug are supplied on the following terms and conditions and no variation of those terms and conditions shall have effect unless expressly accepted by a Director of Rawlplug in writing. Rawlplug's conditions exclude any other terms and conditions which the Customer may seek to impose whether or not the Customer's conditions are contained in any other acceptance or counter offer made by the Customer.

3. QUOTATIONS

All quotations given by Rawlplug are subject to acceptance by Rawlplug on receipt of the Customer's order. A Contract will only be formed when Rawlplug has accepted the Customer's order.

4. ACCURACY OF DESCRIPTION OF GOODS

All descriptions specifications drawings and particulars of weights and dimensions submitted by Rawlplug or otherwise contained in Rawlplug's price list or other published matter are provided by Rawlplug in the belief that they are as accurate as reasonably possible but none of these shall form part of any Contract, shall not constitute a description of the Goods or be taken to be representations made by Rawlplug and are not warranted to be accurate.

5. PRICE

All prices quoted are Rawlplug's current prices at the time of delivery and are exclusive of VAT unless otherwise stated. The price payable for the Goods shall be the price ruling at the date of despatch and Rawlplug shall be entitled to adjust the price of the Goods at any time between the date of the order and the date of delivery of the Goods to take account of any increase in costs incurred by Rawlplug.

6. DELIVERY

6.1 Delivery shall be deemed to have been effected:

6.1.1 Where the Goods are carried in a vehicle owned by Rawlplug or in a vehicle owned by a carrier employed by Rawlplug when the vehicle is stationary as near to the point of delivery designated by the Customer as it can reasonably get and the delivery note is tendered to the Customer or the recipient of the Goods where delivery is not directly to the Customer.

6.1.2 In all other cases when the Goods leave Rawlplug's premises.

6.2 Time for delivery is not of the essence and Rawlplug shall not be liable for any loss or damage caused by late delivery or by non-delivery.

6.3 Rawlplug shall be entitled to make delivery by instalments and to invoice separately for each instalment. Where delivery is made by instalment each instalment shall be construed as the subject of a separate agreement to which all the provisions of these conditions shall (with any necessary alterations) apply.

6.4 Where Rawlplug has agreed to deferred delivery such delivery shall be accepted by the Customer within six months from the date of the order. If the Customer fails to take delivery within such a period the risk shall pass to the Customer and the balance remaining undelivered together with storage costs shall be invoiced to the Customer and payment shall become immediately due.

6.5 Goods which the customer agrees to collect ex works must be collected within seven days of Rawlplug notifying the Customer that the Goods are ready. If the Goods are not collected within this period Rawlplug shall be entitled to invoice the Customer for the Goods and to charge for storage of the Goods the Goods being held at the Customer's risk.

6.6 Deviations in quantity of the Goods delivered from those stated on the Contract shall not give the Customer the right to repudiate the Contract to reject the Goods (save insofar as they materially exceed the amount ordered) or to claim damages for breach of Contract and the Customer shall be obliged to accept and pay at the Contract rate for the quantity delivered (except insofar as the Customer has the right to reject the Goods under this condition).

6.7 The Customer shall ensure that the point of delivery designated by the Customer and all access routes to it are reasonably accessible for motor transport and shall also take such further steps as are reasonably necessary to facilitate delivery by Rawlplug at such point of delivery.

7. PAYMENT

7.1 The price of the Goods (less any discount to which Customer is entitled) shall be due and payable on the last day of the month following that in which the invoice is dated. The time of payment of the price of the Goods shall be of the essence of the Contract.

7.2 If the Customer fails to make payment in respect of any invoice on the due date;

7.2.1 All invoices for Goods delivered for which payment has not been received shall become immediately due and payable not withstanding clause 7.1 or any previous agreement to the contrary.

7.2.2 Without prejudice to any other right or remedy available to Rawlplug, Rawlplug shall be entitled to:

7.3.1 Charge the Customer interest (both before and after judgement) on the amount unpaid at the rate of 2% above the U.K. Clearing Bank base lending rate from time to time, until actual payment on all overdue accounts.

7.3.2.2 cancel the Contract or suspend any further deliveries to the Customer.

7.4 Rawlplug reserves the right at any time to demand security for payment before continuing with or delivering any order.

8. RISK AND PROPERTY

8.1 Risk in the Goods shall pass to the Customer when the Goods are delivered or collected by the Customer or its agent.

8.2 Notwithstanding delivery and the passing of risk in the Goods the Goods shall remain the property of Rawlplug until the Customer has paid the full price for the goods and all other sums owing from it to Rawlplug under any Contract together with any interest payable under any Contract in respect of the Goods.

8.3 Until title to the Goods passes to the Customer the Customer shall hold the Goods as fiduciary agent and bailee for Rawlplug and shall keep the Goods in good and substantial repair and condition properly stored protected and insured and the Goods shall be stored in such a way as to be clearly identifiable as belonging to Rawlplug.

8.4 Until such time as the title in the Goods passes to the Customer (and provided the Goods are still in existence and have not been re-sold) Rawlplug shall be entitled at any time to require the Customer to deliver up the Goods to Rawlplug and if the Customer fails to do so forthwith to enter upon any premises of the Customer or any third Party where the Goods are stored and repossess the Goods.

8.5 Rawlplug shall at any time be entitled to appropriate any payment made by the Customer in respect of any Goods in settlement of such invoices as Rawlplug may in its absolute discretion think fit notwithstanding any purported appropriation by the Customer.

9. INSPECTION • SHORT AGES

9.1 The Customer shall inspect the Goods on delivery or on collection as the case may be.

9.2 Rawlplug shall be under no liability for any defects or shortages that would be apparent on careful inspection if the terms of this Clause are not complied with and in any event will be under no liability if a written complaint is not delivered to Rawlplug within seven days of delivery detailing the alleged defect or shortage.

9.3 In all cases where the Customer complains of defects or shortages Rawlplug shall without prejudice to the question of liability generally be under no liability in any event if it has not been given an opportunity to inspect the Goods before they had been used by the Customer.

9.4 Proof of delivery is available from the customer services department for a period of 28 days from the date of invoice. If a proof of delivery is requested more than 28 days after the date of the invoice or requested again Rawlplug Ltd shall be under no obligation to provide such proof and if the company decides to provide such proof of delivery it shall charge and administration fee of £5.

CARRIAGE CHARGES

10. WARRANTY

10.1 Rawlplug warrants that it has title to and the right to sell the Goods.

10.2 No representation or warranty is given by Rawlplug as to the suitability or fitness of the Goods for any or any particular purpose and the Customer shall satisfy himself in this respect and shall be totally responsible therefore.

11. LIABILITY EXCLUSIONS

11.1 Each of the sub-clauses in this clause are to be treated as separate and independent.

11.2 Nothing in these conditions shall exclude or restrict Rawlplug's liability for death or personal injury caused by the negligence of Rawlplug.

11.3 Rawlplug is willing to undertake liability additional to that provided by this clause 11 in exchange for a higher price for the Goods.

11.4 Rawlplug will either repair the Goods at its own expense or at its option replace the Goods if any defects which Rawlplug is reasonably satisfied are caused by faulty design manufacture materials or workmanship which are discovered within three months from the date of despatch provided that Rawlplug shall not be liable for defects caused by abnormal use misuse or neglect or use other than in accordance with any applicable Rawlplug technical instructions or similar literature and provided further that the Customer informs Rawlplug of the relevant defect in writing within seven days of delivery (or where the defect was not apparent on reasonable inspection) within seven days of discovering it.

11.5 Other than the terms set out in these conditions no other terms conditions or warranties expressed or implied statutory or otherwise shall form part of the Contract.

11.6 Rawlplug shall not be liable for any direct or indirect loss or damage, loss of profit, loss of goodwill or loss of business opportunity suffered by the Customer or any damage to property of the Customer or anyone else whatsoever howsoever arising and whether or not caused by Rawlplug's negligence.

11.7 In the event that notwithstanding the foregoing provisions of this clause Rawlplug is found liable for any loss or damage suffered by the Customer then Rawlplug's total liability for any one claim or for the total of all claims arising from any one act or default of Rawlplug (whether arising from Rawlplug's negligence or otherwise) shall not in any event exceed the Contract price for the Goods.

12. INSOLVENCY OF CUSTOMER

If the Customer being a company shall pass a resolution or suffer an order of a court to be made for its winding up or goes into liquidation (otherwise than for the purposes of amalgamation or reconstruction) or makes any voluntary arrangement with its creditors or becomes subject to an administration order or an encumbrancer takes possession or a receiver or administrative receiver is appointed of any of the assets or property of the Customer or being an individual or partnership shall suspend payment or propose to enter into any composition with creditors or becomes bankrupt or in either case becomes unable to pay its debts (or have no reasonable prospect of so doing) or threatens to cease to carry on business then without prejudice to any other right or remedy available to Rawlplug, Rawlplug shall be entitled to treat the Contract as repudiated or suspend any further deliveries or recover the possession of any Goods for which payment in full has not been received without liability to the Customer and if Goods have been delivered but not paid for the price of those Goods shall become immediately due and payable notwithstanding any previous agreement or arrangement to the contrary.

13. SAMPLE GOODS

In no circumstances will Rawlplug sell its Goods by sample and the supply of sample Goods to Customers or prospective Customers is not intended to provide them with a contractual specification of the Goods or to constitute a sale or offer of sale by sample.

14. HEALTH AND SAFETY AT WORK

Rawlplug gives notice to the Customer that information and product literature is available concerning the conditions necessary to ensure that the Goods supplied against the Contract will be safe and without risk to health when used handled processed stored or transported by a person at work. The Customer should immediately contact Rawlplug if he is not in possession of such information or literature.

15. ASSIGNMENT

The Customer shall not assign or transfer or purport to assign and transfer any Contract to which these conditions apply or the benefit thereof to any other person whatsoever.

16. FORCE MAJEURE

Rawlplug shall not be liable for any failure to deliver the Goods arising from circumstances outside Rawlplug's control including for example acts of god, war, riot, explosion, abnormal weather, fire, flood, strikes, lock outs, Government action or Regulations (UK or otherwise) delays by suppliers, accidents and shortages of materials, labour or manufacturing facilities.

17. CANCELLATION

No cancellation by the Customer is permitted unless expressly agreed by a Director of Rawlplug in writing. In the event of cancellation, the Customer will indemnify Rawlplug fully against all expenses incurred by Rawlplug together with liquidated damages of 20% of the Contract price.

Please add the following (reduce text size on page if required to fit):

18. RETURNS

The Customer must obtain an authorisation number issued by Rawlplug prior to returning any Goods. All Goods to be returned must be consigned carriage paid to Rawlplug's warehouse at Skibo Drive, Thornliebank Industrial Estate, Glasgow G46 8JR. All returns will be subject to a handling charge amounting 20%. Goods can only be accepted for return if upon examination they are found to be in the same condition in all respects as upon delivery. Goods with a defined shelf life will only be accepted for return for credit or replacement if a minimum of three months shelf-life remains.

NO return of Chemical based products which include Resins, Foams, Silicones & Gas fuel cells, in accordance with the Rawlplug Quality Assurance Policies is accepted unless there is a proven manufacturing fault. The customer should follow local government guidelines in disposing of any of our un-used chemical products.

However should there be a potential fault in the product, please ensure that Rawlplug Customer Service is notified, who in turn will action and inform Rawlplug's internal departments (Purchasing, Technical etc) for testing to confirm if a manufacturing error has taken place.

19. NOTICES

Any notices to be given hereunder shall be in writing and shall be deemed to have been duly given if sent or delivered to Rawlplug at its address (given below) or such other address as that party may from time to time notify in writing and shall be deemed to have been served and sent by post 48 hours after posting.

20. WAIVER

No waiver by Rawlplug of any breach of the Contract by the Customer shall be considered as a waiver of any subsequent breach of the same or any other provision.

21. JURISDICTION

All contracts between Rawlplug and the Customer shall be governed and construed in accordance with English law and all disputes arising in relation to such Contracts shall be submitted to the jurisdiction of the English courts save that Rawlplug retain the right to take proceedings in any other court of competent jurisdiction.

22. HEADINGS

Headings in these conditions are for each of reference only and do not form part of the conditions and shall not be deemed to alter or affect the meaning of any of the conditions.

Rawlplug Ltd, Skibo Drive, Thornliebank Industrial Estate, Glasgow G46 8JR

DELTA SPIRAL NYLON PLUGS

For strong fixings in lightweight building blocks

This tough nylon plug is ideal for making strong, safe fixing masonry, and is particularly efficient in modern lightweight masonry, although test results in brickwork and concrete are satisfactory.

Its positive grip is obtained from the all-round expansion of the plug, which is made possible by the spiral slots that run the way along the plug from the tip. Special external form confers to enhance the plug's gripping powers.

Projecting from the sides of the plugs are angled fins designed to prevent plug rotation in soft masonry, but not to impede plug entry in hard masonry.

Several screw sizes are accepted by each size of Delta plug, and internal spiral webs keep the smaller screw sizes in the plug's centre, preventing the screw from running out at the side. Accurate screw entry is assured by the good lead-in, which also allows the plain shank of a screw to be accepted - thus very thin items can easily be fixed without damage to wall surface. The Delta plug is tough enough to be hammered into a tight hole, as the material from which the plug is made is stronger than other plastics, and is also more stable at high temperatures.

1292
RAWLPLUG
DE-SPEEDER



THE RAWLPLUG COMPANY LIMITED

A Burmah Company

THE WORLDS LARGEST MANUFACTURERS OF FIXING DEVICES



RAWLBOLTS

NORMAL LOAD CAPACITY OF RAWLBOLTS

As the test results show, properly fitted Rawlbolts will withstand greater loads than the bolts, or masonry, can hold, and therefore they can be used with complete confidence to carry the full load capacity of the fixing bolt.

Unfortunately, masonry strength varies over a very wide range and is often the weakest part of a fixing. Therefore we recommend using a Safety Factor when choosing fixing sizes for given loads.

Our experience has shown that for a Constant Steady Load a factor of 5 : 1 is sufficient to cover most variations in masonry strength. But where there is a possibility of loads being suddenly applied (Shock Loads), we recommend increasing the safety factor to 10 : 1. This is normal practice for constructional items subject to varying stresses.

The Table below shows our recommended loading for standard Rawlbolts fitted in the correct manner in good quality masonry.

Because bolts are not so strong in Shear as they are in Tension, it is accepted practice for bolts supporting a Shear load to be permitted to carry up to 75% of the load the same bolt would carry in Tension.

The figures given for Shear loads are in this ratio.

Nominal Size of Bolt	Code Letter	Tensile Loads				Shear Loads			
		Safe Steady Load		Safe Shock Load		Safe Steady Load		Safe Shock Load	
		lbs.	kilos	lbs.	kilos	lbs.	kilos	lbs.	kilos
ins.									
3/16	A	280	127	140	63.5	210	95	105	47.5
1/4	C	440	199	220	99	330	149	363	164

We are
RAWLPLUG

We are

INDUSTRY STANDARD BY DESIGN™

Over 100 years of expertise

CALL

+44(0) 141 6387 961

EMAIL

sales@rawlplug.co.uk

VISIT

www.rawlplug.co.uk

Rawlplug Ltd
Skibo Drive
Thornliebank Industrial Estate
Glasgow G46 8JR

SEARCH RAWLPLUG



We are

RAWLPLUG®